



**DIGITAL REPEATER SYSTEM**

**ID-RP2**

**Instruction Manual**

***NOTE:***

This instruction manual is about the ID-RP2C without the assist function. If you are using the function, refer to the ID-RP2C instruction manual with the assist function.

---

## IMPORTANT

---

**READ THIS INSTRUCTION MANUAL CAREFULLY** before installing or operating the repeater.

**SAVE THIS INSTRUCTION MANUAL.** This manual contains important safety and operating instructions for the ID-RP2 system.

---

## PRECAUTIONS

---

⚠ **DANGER!** ID-RP2 installation, is intended for professional installation only. We are not responsible for any building breakage, any damage resulting from a drop of the antenna from a high place or unstable site or resulting from any personal injury nor any accident in any other cases. Be sure to consult an expert engineer for installations.

⚠ **WARNING RF EXPOSURE!** This device emits Radio Frequency (RF) energy. Extreme caution should be observed when operating this device. If you have any questions regarding RF exposure and safety standards please refer to the Federal Communications Commission Office of Engineering and Technology's report on Evaluating Compliance with FCC Guidelines for Human Radio Frequency Electromagnetic Fields (OET Bulletin 65).

⚠ **WARNING HIGH VOLTAGE! NEVER** attach an antenna or internal antenna connector during transmission. This may result in an electrical shock or burn.

⚠ **WARNING HIGH VOLTAGE! NEVER** install the antenna at any location where a person could easily touch the antenna during transmission. This may result in an electrical shock or burn.

⚠ **WARNING! NEVER** apply AC to the [DC 13.8V IN] connector. This could cause a fire or damage the repeater.

⚠ **WARNING! NEVER** apply more than 16 V DC to the [DC 13.8V IN] connector on the repeater. This could cause a fire or damage the repeater.

⚠ **WARNING! NEVER** let metal, wire or other objects touch any internal part or connectors on the repeater. This may result in an electric shock or this could cause a fire or may damage the repeater.

⚠ **WARNING! NEVER** operate or touch the repeater unit, ID-RP2C, ID-RP2D and ID-RP2V, with wet hands. This may result in an electric shock or may damage to the repeater unit.

⚠ **WARNING! NEVER** connect the repeater to a power source using reverse polarity. This will damage the repeater. Make sure the repeater power is turned OFF when connecting a power supply.

**DO NOT** use or place the repeater unit, ID-RP2C, ID-RP2D and ID-RP2V, in areas with temperatures below  $-10^{\circ}\text{C}$  ( $+14^{\circ}\text{F}$ ) or above  $+50^{\circ}\text{C}$  ( $+122^{\circ}\text{F}$ ).

---

## EXPLICIT DEFINITIONS

---

WORD	DEFINITION
⚠ <b>DANGER!</b>	Personal death, serious injury or an explosion may occur.
⚠ <b>WARNING!</b>	Personal injury, fire hazard or electric shock may occur.
<b>CAUTION</b>	Equipment damage may occur.
<b>NOTE</b>	If disregarded, inconvenience only. No risk or personal injury, fire or electric shock.

**DO NOT** place the repeater unit, ID-RP2C, ID-RP2D and ID-RP2V, in excessively dusty environments or in direct sunlight.

**DO NOT** place the repeater unit, ID-RP2C, ID-RP2D and ID-RP2V against walls or putting anything on top of the units. This will obstruct heat dissipation.

**DO NOT** use harsh solvents such as benzine or alcohol to clean the repeater, as they will damage the repeater's surfaces. If the repeater becomes dusty or dirty, wipe it clean with a soft, dry cloth.

**DO NOT** modify the repeater for any reason.

Place the repeater in a secure place to avoid inadvertent use by children.

Use the specified fuse only.

### **For U.S.A. only**

**CAUTION:** Changes or modifications to this repeater, not expressly approved by Icom Inc., could void your authority to operate this repeater under FCC regulations.

Icom is not responsible for the destruction or damage to the Icom product, if the malfunction is because of:

- Force majeure, including, but not limited to, fires, earthquakes, storms, floods, lightning, other natural disasters, disturbances, riots, war, or radioactive contamination.
- The use of Icom products with any equipment that is not manufactured or approved by Icom.

Icom, Icom Inc. and Icom logo are registered trademarks of Icom Incorporated (Japan) in Japan, the United States, the United Kingdom, Germany, France, Spain, Russia, Australia, New Zealand, and/or other countries.

Microsoft, Windows is either registered trademarks or trademarks of Microsoft Corporation in the United States and/or other countries. All other products or brands are registered trademarks or trademarks of their respective holders.

---

## FCC INFORMATION

---

This equipment has been tested and found to comply with the limits for a Class B digital device, pursuant to part 15 of the FCC Rules. These limits are designed to provide reasonable protection against harmful interference in a residential installation. This equipment generates, uses and can radiate radio frequency energy and, if not installed and used in accordance with the instructions, may cause harmful interference to radio communications. However, there is no guarantee that interference will not occur in a particular installation.

If this equipment does cause harmful interference to radio or television reception, which can be determined by turning the equipment off and on, the user is encouraged to try to correct the interference by one or more of the following measures:

- Reorient or relocate the receiving antenna.
- Increase the separation between the equipment and receiver.
- Connect the equipment into an outlet on a circuit different from that to which the receiver is connected.
- Consult the dealer or an experienced radio/TV technician for help.

---

## TABLE OF CONTENTS

---

IMPORTANT .....	i
EXPLICIT DEFINITIONS .....	i
PRECAUTIONS .....	i
FCC INFORMATION .....	ii
<b>1 SYSTEM OUTLINE .....</b>	<b>1</b>
■ ID-RP2C .....	1
■ ID-RP2D .....	1
■ ID-RP2V .....	1
■ AH-108: 1.2 GHz Collinear antenna .....	1
<b>2 SUPPLIED ACCESSORIES .....</b>	<b>2</b>
■ Accessories for ID-RP2C .....	2
■ Accessories for ID-RP2D/ID-RP2V .....	2
■ Accessories for AH-108 .....	2
<b>3 PANEL DESCRIPTIONS .....</b>	<b>3–5</b>
■ ID-RP2C (Front panel) .....	3
■ ID-RP2C (Rear panel) .....	3
■ ID-RP2D (Front panel) .....	4
■ ID-RP2D (Rear panel) .....	4
■ ID-RP2V (Front panel) .....	5
■ ID-RP2V (Rear panel) .....	5
<b>4 INSTALLING AND CONNECTING .....</b>	<b>6–8</b>
■ Attaching an “N” connector .....	6
■ Power supply requirements .....	6
■ Installing in a system rack .....	6
■ Attaching the rubber feet .....	6
■ Grounding .....	6
■ System connections .....	7
■ Antenna assembling .....	8
◇ AH-108 .....	8
<b>5 DRIVER INSTALLATIONS .....</b>	<b>9–17</b>
■ Microsoft® Windows® 8.1 .....	9
■ Microsoft® Windows® 7 .....	12
■ Checking the COM port .....	14
◇ Microsoft® Windows® 8.1 .....	14
◇ Microsoft® Windows® 7 .....	15
■ Uninstalling the USB driver .....	16
◇ Microsoft® Windows® 8.1 .....	16
◇ Microsoft® Windows® 7 .....	17

<b>6 INSTALLING THE UTILITY SOFTWARE....</b>	<b>18–20</b>
■ Installing .....	18
■ Uninstalling the Utility software .....	20
<b>7 REPEATER SETTINGS .....</b>	<b>21–26</b>
■ ID-RP2C setting .....	21
◇ ID-RP2C utility screen .....	22
■ Frequency setting for ID-RP2D .....	25
■ Frequency setting for ID-RP2V .....	26
<b>8 MAINTENANCE .....</b>	<b>27–28</b>
■ Troubleshooting .....	27
■ Cleaning .....	28
■ Replacing fuses .....	28
◇ OPC-1309 .....	28
◇ OPC-1380 .....	28
<b>9 SPECIFICATIONS AND OPTIONS .....</b>	<b>29–30</b>
■ Specifications .....	29
◇ ID-RP2C .....	29
◇ ID-RP2D/ID-RP2V .....	30
■ Options .....	30
<b>10 INFORMATION .....</b>	<b>31</b>
■ About CE and DOC .....	31
■ Disposal .....	31
■ Country code list .....	31

# 1 SYSTEM OUTLINE

A Digital Smart Technologies for Amateur Radio (D-STAR) repeater can be constructed by combining the following equipment, depending on your site plan.

ID-RP2C: Repeater controller

ID-RP2D: 1.2 GHz data repeater

ID-RP2V: 1.2 GHz digital voice repeater

In addition, the following options may also be required for system repeater operations.

AH-108: 1.2 GHz Collinear antenna

## ■ ID-RP2C

➤The ID-RP2C is a repeater controller and one controller must be used in each repeater site.

The controller relays digital voice or data (traffic) signals for repeater operation.

➤A total of four interface connectors for local repeater connections are available.

Both digital voice and data repeaters can be connected as desired.

### • Typical configuration:

One data repeater

One digital voice repeater

Two extra for additional repeaters.

/// **NOTE:** Connecting only 1 or 2 repeaters for the same frequency band is recommended to avoid interference.

➤One Ethernet port (10Base-T) is available for setting the operating frequency, repeater site call sign, IP address and operation monitoring, using the PC and the ID-RP2C utility software.

Or, a gateway control PC can be connected if desired.

### **About the ID-RP2C Utility software:**

The ID-RP2C boxed with this instruction manual requires the utility software revision 2.2 or later. The utility software revision 2.0 or earlier is not compatible.

## ■ ID-RP2D

➤The ID-RP2D is a 1.2 GHz data (128 kbps) repeater and connects to the ID-RP2C.

\*The ID-RP2D never functions as a stand-alone repeater without the ID-RP2C, because no relay function is built-in.

➤The ID-RP2D and ID-RP2V utility software, supplied with the ID-RP2C, and a PC are required for both receive and transmit frequency settings.

➤Repeater operation is performed in simplex mode on the same frequency for data mode. However, different frequencies between transmit and receive can be set in simplex mode.

## ■ ID-RP2V

➤The ID-RP2V is a 1.2 GHz digital voice and slow-speed data repeater (4.8 kbps) and connects to the ID-RP2C.

\*The ID-RP2V never functions as a stand-alone repeater without the ID-RP2C, because no relay function is built-in.

/// **NOTE:** No audio CODEC is performed in the ID-RP2V, thus the ID-RP2V receives and transmits 4.8 kbps serial data only.

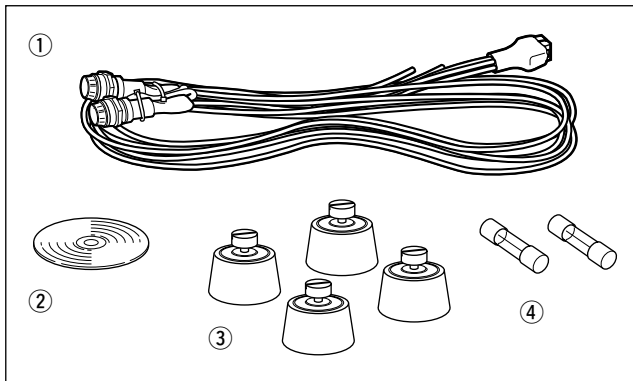
➤Different frequencies are used for each transmission and reception in semi-duplex mode.

➤The ID-RP2D/V utility software, supplied with the ID-RP2C, and a PC are required for both receive and transmit frequency settings.

## ■ AH-108: 1.2 GHz Collinear antenna

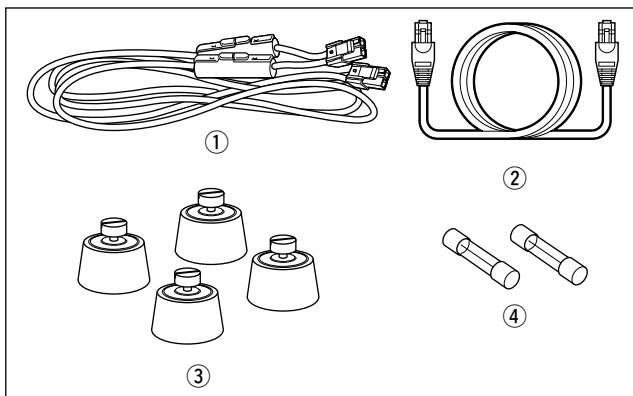
➤Two collinear antennas are built-in and better isolation is provided than two separated antennas.

## ■ Accessories for ID-RP2C



- ① Power cable (OPC-1380; approximately. 3 m; 10 ft) .. 1
- ② CD (USB driver, Utility software)..... 1
- ③ Rubber feet ..... 4
- ④ Spare fuses (FGB01 30A) ..... 2

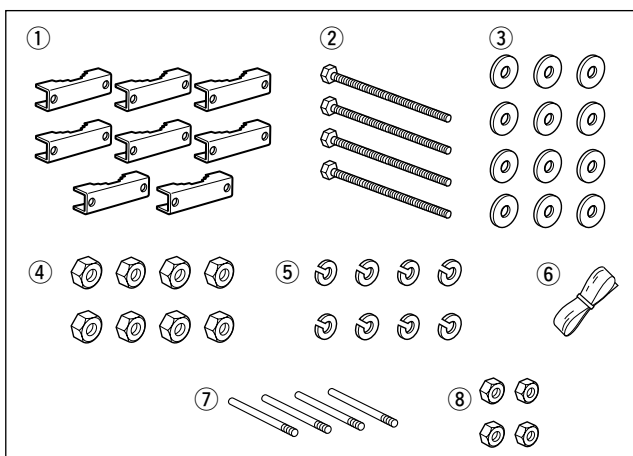
## ■ Accessories for ID-RP2D/ID-RP2V



- ① Power cable (OPC-1309; approximately. 1 m; 3.3 ft) ... 1
- ② Control cable (OPC-1069) approximately. 3 m; 9.8 ft).. 1
- ③ Rubber feet ..... 4
- ④ Spare fuses (FGB10A) ..... 2

**NOTE:** Coaxial cables, USB and LAN cables and other hardware needed for installation, that are not listed in this manual as supplied, must be purchased separately.

## ■ Accessories for AH-108



- ① Pole clamps ..... 8
- ② Bolts (M8x160) ..... 4
- ③ Flat washers (M8) ..... 12
- ④ Nuts (M8) ..... 8
- ⑤ Spring washers (M8) ..... 8
- ⑥ Rubber vulcanizing tape (approximately. 60 cm; 2 ft) 1
- ⑦ Radials ..... 4
- ⑧ Nuts (M6) ..... 4

### ■ ID-RP2C (Front panel)



#### ❶ POWER SWITCH [POWER]

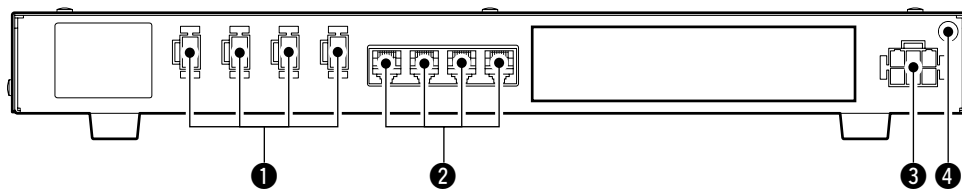
Push to turn ON the power.

The LED indicator located at right lights when the power is turned ON.

#### ❷ 10BASE-T CONNECTOR [10BASE-T] (p. 24)

Connects a PC with LAN cable to set the details of the repeater site, such as the call sign, IP address. A Gateway server can also be connected to this connector.

### ■ ID-RP2C (Rear panel)



#### ❶ POWER CONNECTORS

[LOCAL RPT— DC13.8V OUT] (p. 7)

Outputs 13.8 V DC for local repeater.

Connects the ID-RP2D/V with the supplied DC power cable (OPC-1309; supplied with the ID-RP2D/V). The same voltage as the supplied voltage to [DC13.8V IN] connector is output regardless of the [POWER] switch condition on the front panel.

#### ❷ [LOCAL RPT— CONT I/O] (p. 7)

Input/output ports for local repeater to received or transmitted serial data routing.

Connects the ID-RP2D/V with the supplied control cable (supplied with the ID-RP2D/V).

#### ❸ POWER CONNECTOR [DC 13.8V IN] (p. 7)

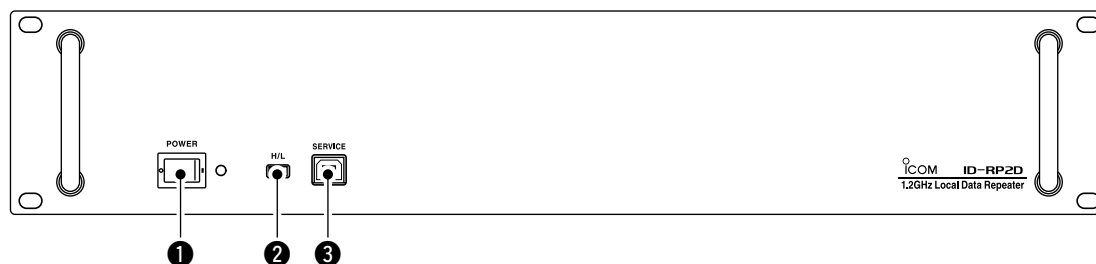
DC power input connector for the ID-RP2 system.

Connects a 13.8 V DC power supply unit with the DC power cable (OPC-1380; supplied with the ID-RP2C).

#### ❹ GROUND TERMINAL [GND] (p. 10)

Connects to a ground to prevent electrical shocks, TVI, BCI and other problems.

## ■ ID-RP2D (Front panel)



### ❶ POWER SWITCH [POWER]

Push to turn ON the power.

The LED indicator located at right lights when the power is turned ON.

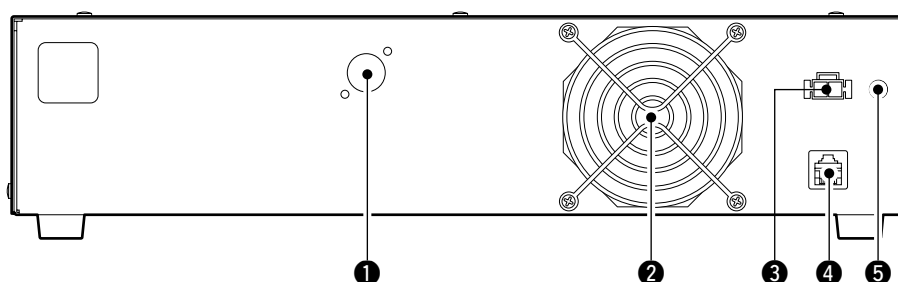
### ❷ HIGH/LOW POWER SELECT SWITCH [H/L]

Select either High (approximately 10 W) or Low (approximately 1 W) output power.

### ❸ SERVICE CONNECTOR [SERVICE] (p. 25)

Connects a PC with an A-B type USB cable to set the both transmit and receive frequencies. (User supplied cable)

## ■ ID-RP2D (Rear panel)



### ❶ ANTENNA CONNECTOR [ANT] (p. 7)

Connect the optional AH-108 1.2 GHz Collinear antenna.

When both the ID-RP2D and ID-RP2V is composed in a site, an antenna filter, such as band-pass filter, resonator, or so, should be installed between the ID-RP2D and antenna to protect the ID-RP2D reception from interference of the ID-RP2V downlink signal.

### ❷ COOLING FAN

### ❸ POWER CONNECTOR [DC13.8V] (p. 7)

Connects to the ID-RP2C with the supplied DC power cable (OPC-1309) to be supplied the DC power.

### ❹ [CONT I/O] (p. 7)

Connects to ID-RP2C with the supplied control cable for received or transmitted serial data communication.

### ❺ GROUND TERMINAL [GND] (p. 6)

Connects to a ground to prevent electrical shocks, TVI, BCI and other problems.

#### ■ ID-RP2V (Front panel)



##### ❶ POWER SWITCH [POWER]

Push to turn ON the power.  
The LED indicator located at right lights when the power is turned ON.

##### ❷ HIGH/LOW POWER SELECT SWITCH [H/L]

Select either High (approximately 10 W) or Low (approximately 1 W) output power.

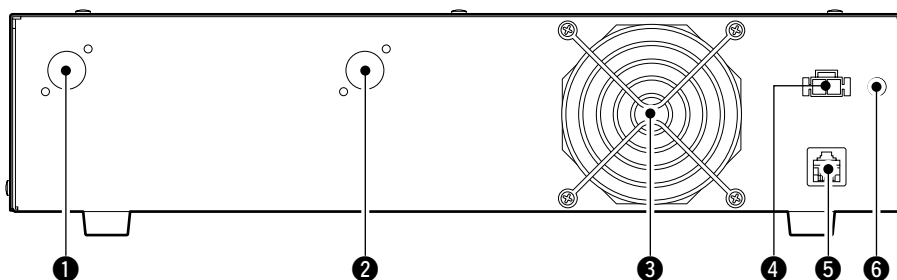
##### ❸ SERVICE CONNECTOR T [SERVICE T] (p. 26)

Connects a PC with an A-B type USB cable to set the transmit frequency. (User supplied cable)

##### ❹ SERVICE CONNECTOR R [SERVICE R] (p. 26)

Connects a PC with an A-B type USB cable to set the receive frequency. (User supplied cable)

#### ■ ID-RP2V (Rear panel)



##### ❶ RECEIVE ANTENNA CONNECTOR [ANT] (p. 7)

Connect the optional AH-108 1.2 GHz Collinear antenna separately, or through a duplexer.

##### ❷ TRANSMIT ANTENNA CONNECTOR [ANT] (p. 7)

Connect the optional AH-108 1.2 GHz Collinear antenna through a duplexer.

##### ❸ COOLING FAN

**NOTE:** Keep the area around the fan free from obstacles.

##### ❹ POWER CONNECTOR [DC13.8V] (p. 7)

Connects to the ID-RP2C with the supplied DC power cable (OPC-1309) to supply the DC power.

##### ❺ [CONT I/O] (p. 7)

Connects to the ID-RP2C with the supplied control cable for serial data communications.

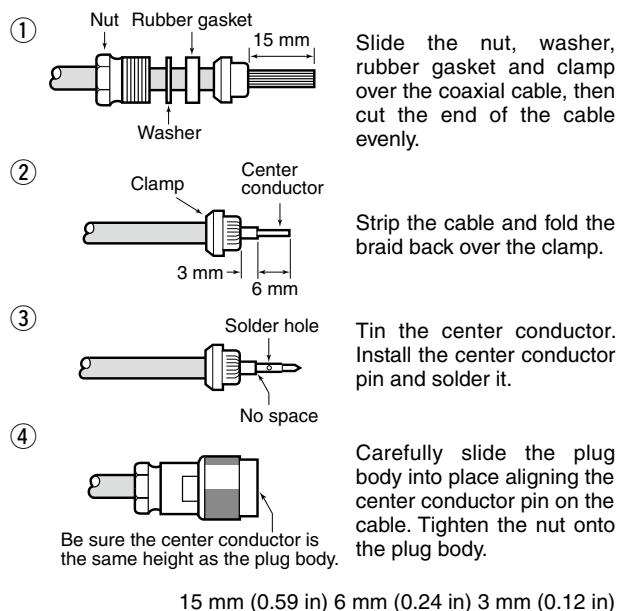
##### ❻ GROUND TERMINAL [GND] (p. 6)

Connects to a ground to prevent electrical shocks, TVI, BCI and other problems.



## ■ Attaching an “N” connector

Use 50  $\Omega$  connectors and coaxial cable.  
Use “N” type connectors between the repeater and the antennas.



## ■ Power supply requirements

Make sure that the DC power supply that is used with the ID-RP2 system is meet the following requirements:

Output voltage: 13.8 V DC  $\pm$ 15%

Current capacity: At least the total current consumption of the connected equipment, with consideration for current fluctuations.

## ■ Installing in a system rack

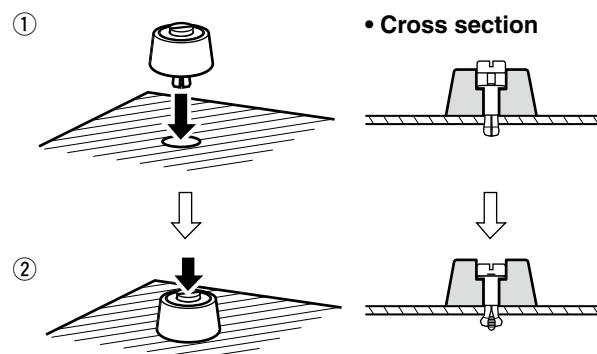
The ID-RP2C/D/V are designed to be installed in a standard EIA 19-inch rack.

Use the supplied bolts with the rack when fixing the ID-RP2C/D/V.

We recommend using a rack that has rails because the weigh of the ID-RP2D and ID-RP2V is approximately 6.2 kg (13.7 lbs) and approximately 7.5 kg (16.5 lbs), respectively.

## ■ Attaching the rubber feet

For desktop installations, attach the supplied rubber feet onto the bottom of the ID-RP2C/D/V as shown below.



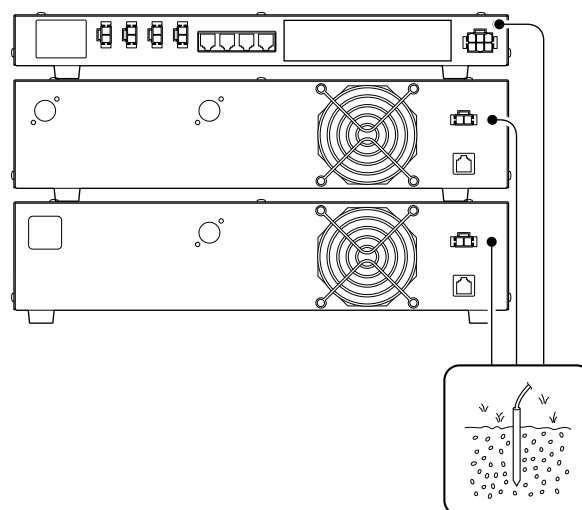
## ■ Grounding

To prevent electrical shock, television interference (TVI), broadcast interference (BCI) and other problems, ground the transceiver through the GROUND terminal on the rear panel.

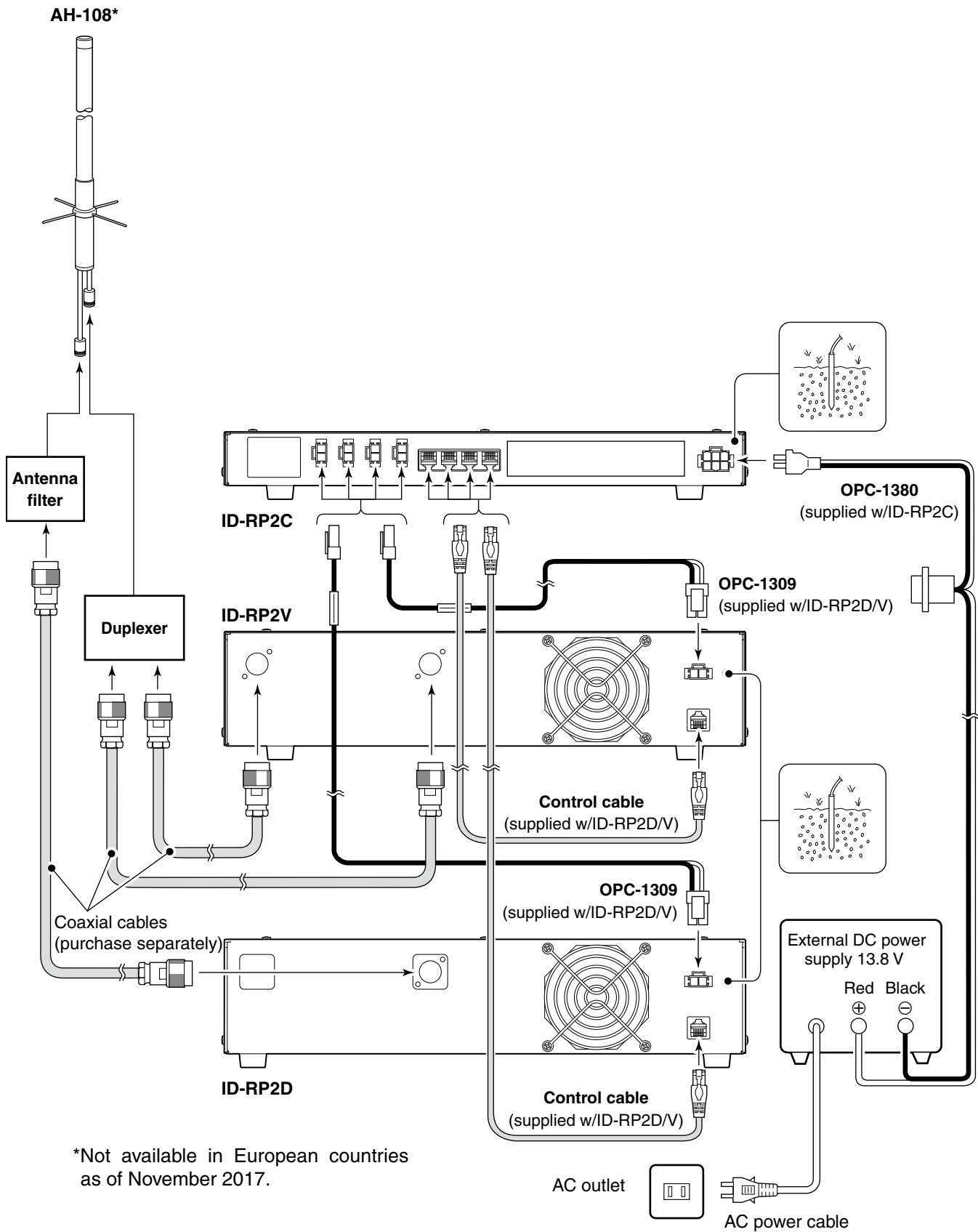
For best results, connect a heavy gauge wire or strap to a long earth-sunk copper rod.

Make the distance between the [GND] terminal and ground as short as possible.

**WARNING: NEVER** connect the [GND] a gas or electric pipe, since the connection could cause an explosion or electric shock.



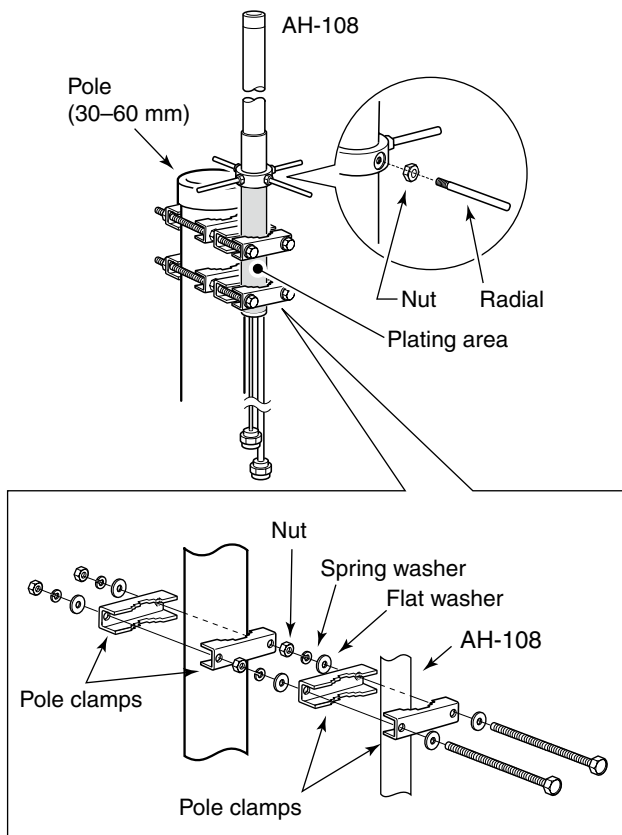
## ■ System connections



## ■ Antenna assembling

(Not available in European countries)

### ◇ AH-108



- ① Attach the nut (M6) to the radial, then attach the radial to the AH-108.
- ② Attach the supplied bolts, pole clamps, spring washers, flat washers and nuts to the AH-108 as illustrated at left.

**CAUTION!:** The pole clamps must be attached to the plating area only. Attachment to other part may cause damage of the AH-108 due to strength shortage.

- ③ Fix the AH-108 to the pole using with the supplied pole clamps, spring washers, flat washers and nuts.

# 5

## DRIVER INSTALLATIONS

Use an A-B type USB (Universal Serial Bus) cable between the ID-RP2 and your PC. So, the USB driver installation is required for the PC.

In addition, individual USB driver installations are required for each connector, because the communication port numbers are different.

The instruction that follow describe the installation of the ID-RP2D [SERVICE] connector as an example.

### IMPORTANT!

A different USB driver from the ID-1 is used for the ID-RP2 system.

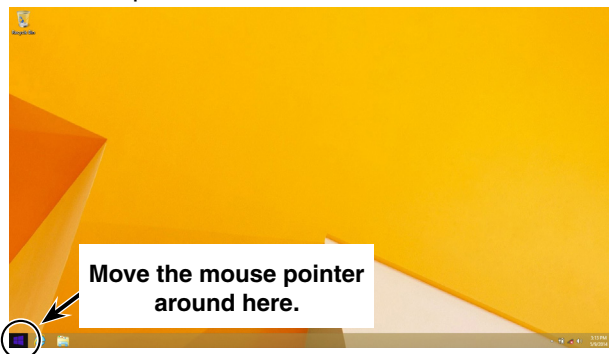
Uninstall the USB driver for ID-1 first, then install the USB driver for the ID-RP2 system, if the USB driver for the ID-1 is installed in the PC.

### NOTE:

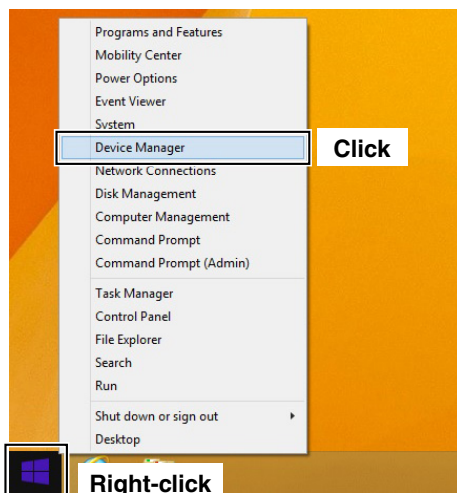
The repeater unit connection may not be recognized by the PC if the USB cable is too long. Use as short a USB cable as possible.

## Microsoft® Windows® 8.1

- ① Start Windows.
  - Quit all other applications if any are running.
  - When installing the driver, log in as the administrator.
- ② Insert the CD that is supplied with the ID-RP2C (Application CD) into the CD drive.
  - If you downloaded the USB driver, skip this step and go to the next step.
- ③ Connect the PC and the ID-RP2D [SERVICE] connector with an A-B type USB cable (User supplied).
- ④ Move the mouse pointer to the bottom left corner of the desktop.

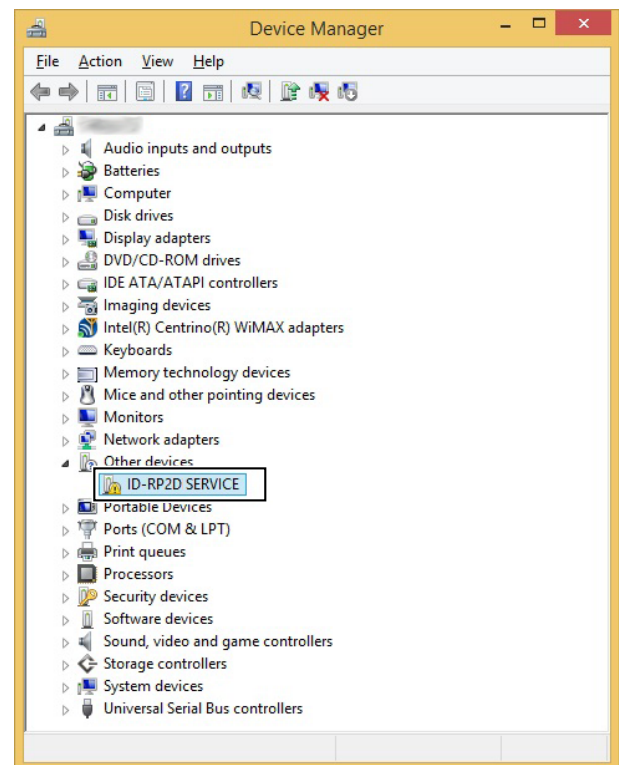


- ⑤ Right-click the Microsoft icon, and then click “Device Manager.”

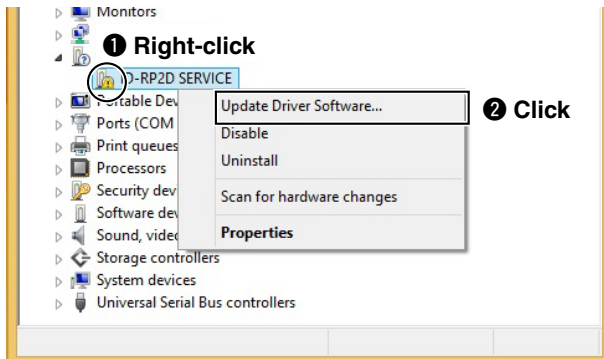


- ⑥ The “Device Manager” window appears, then make sure a warning symbol “⚠” is displayed, as shown below.

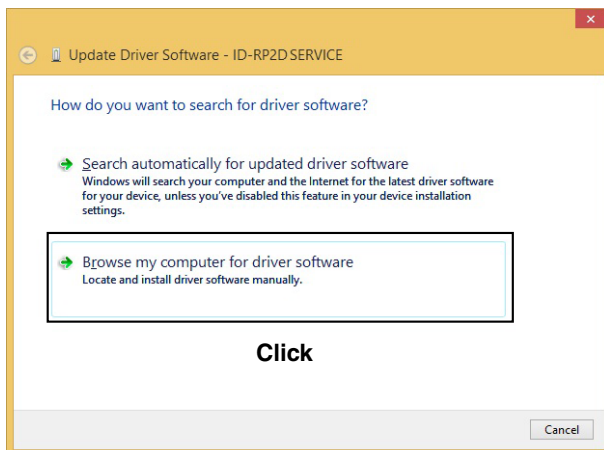
**NOTE:** Although the warning symbol “⚠” indicates that the driver installation has failed, continue the procedure.



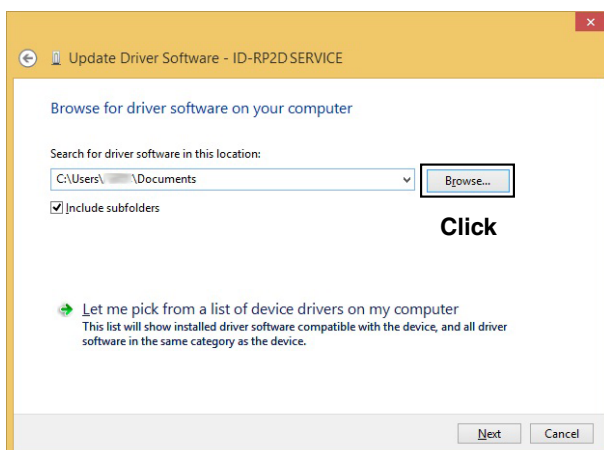
- ⑦ Right-click on the device icon with the warning symbol “⚠,” and then click “Update Driver Software...” on the menu.



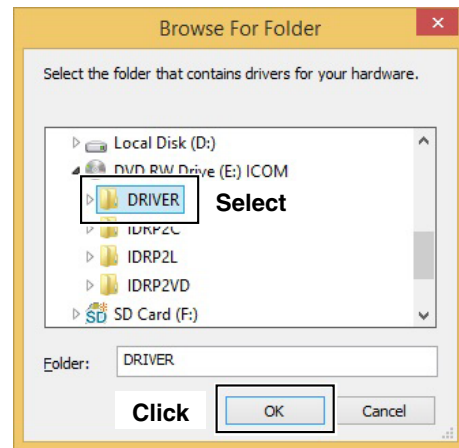
- ⑧ The window shown below will appear. Click “Browse my computer for driver software.”



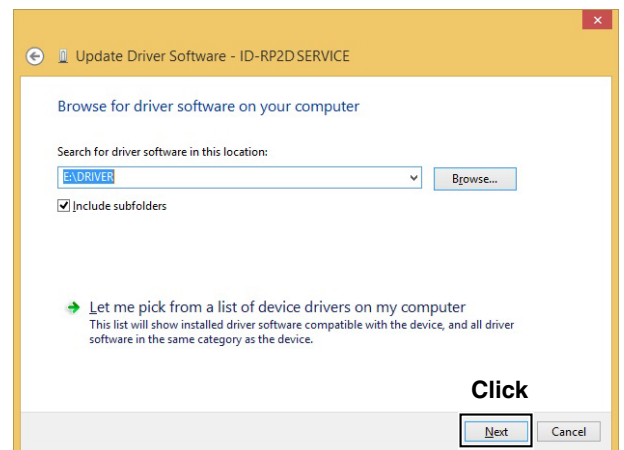
- ⑨ The “Browse for driver software on your computer” will appear. Click [Browse...].



- ⑩ Select the “DRIVER” folder in the application CD, or the unzip driver file (downloaded driver file), and then click [OK].



- ⑪ Click [Next] to start the installation of “ID-RP2D SERVICE” driver software.



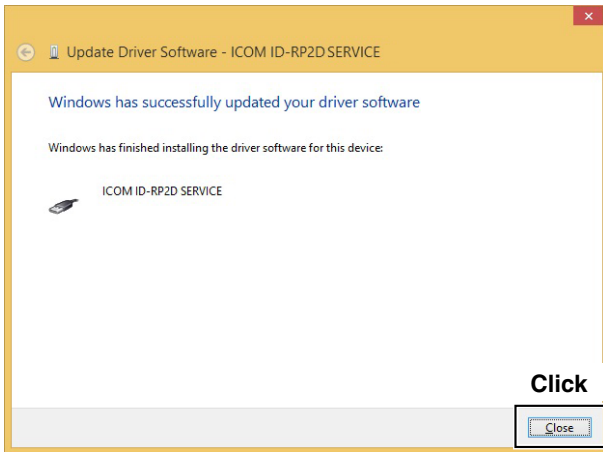
- ⑫ When the Windows Security screen appears, click [Install] to continue.



## 5 DRIVER INSTALLATIONS

### ■ Microsoft® Windows® 8.1— Continued

- ⑬ After the installation is completed, the “Windows has successfully updated your driver software” will appear.  
Click [Close].

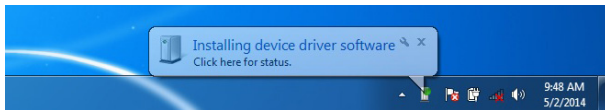


- ⑭ Again, right-click on the device icon with the warning symbol “⚠” in the “Device manager,” and then click “Update Driver Software...” on the menu.
- ⑮ Repeat ⑦ to ⑬, to install the “ID-RP2D SERVICE” driver software.
- ⑯ Eject the CD from the CD drive, and then restart the PC.

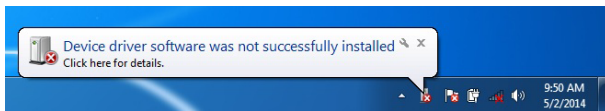


## ■ Microsoft® Windows® 7

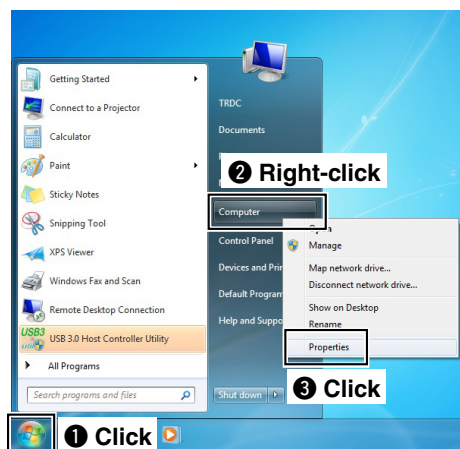
- ① Start Windows.
  - Quit all other applications if any are running.
  - When installing the driver, log in as the administrator.
- ② Insert the CD that is supplied with the ID-RP2C (Application CD) into the CD drive.
  - If you download the USB driver, skip this step and go to the next step.
- ③ Connect the PC and the ID-RP2D [SERVICE] connector with an A-B type USB cable (User supplied). Then the dialog shown below will appear.



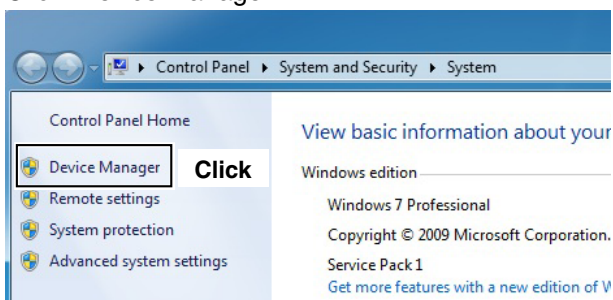
- ④ The “Device driver software was not successfully installed” will appear soon.



- ⑤ Move the mouse pointer to the bottom left corner of the desktop. Click the Windows “START” icon, right-click “Computer” in the <Start> menu, and then click “Properties.”

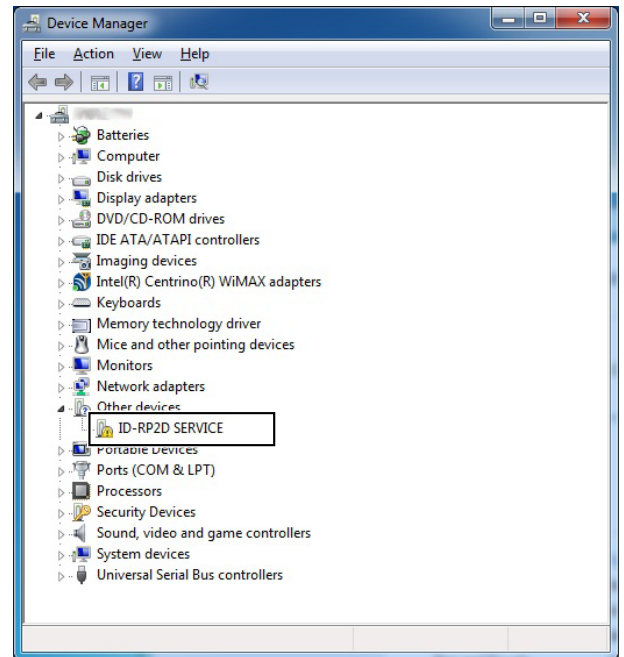


- ⑥ The “Control Panel Home” window will appear. Click “Device Manager.”

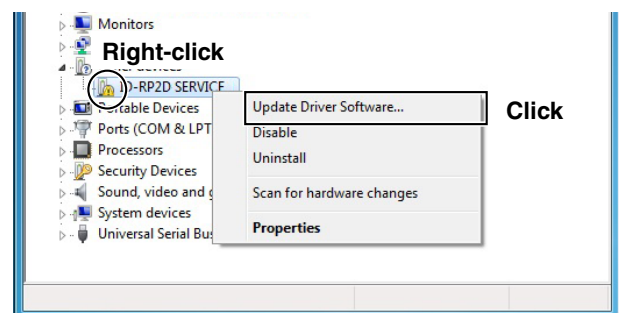


- ⑦ The “Device Manager” window appears, then make sure a warning symbol “⚠” is displayed, as shown below.

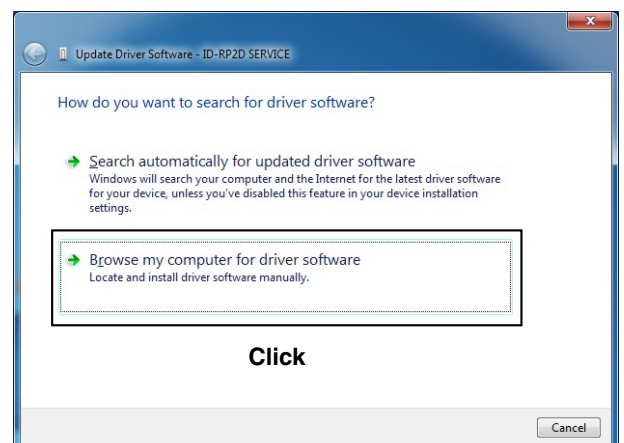
**NOTE:** Although the warning symbol “⚠” indicates that the driver installation has failed, continue the procedure.



- ⑧ Right-click on the device icon with the warning symbol “⚠,” and then click “Update Driver Software...” on the menu.



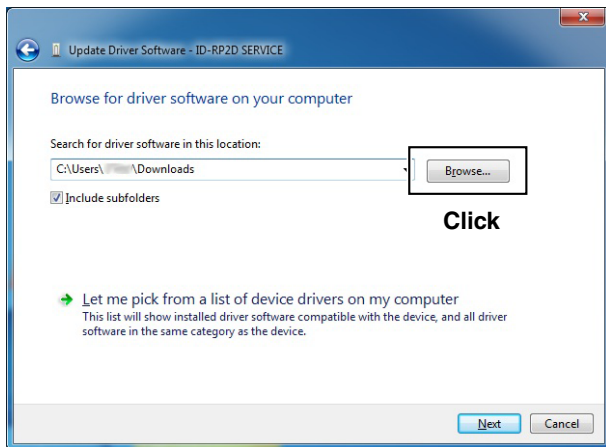
- ⑨ The window shown below will appear. Click “Browse my computer for driver software.”



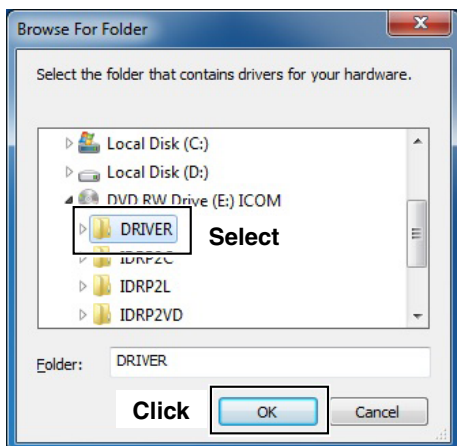
## 5 DRIVER INSTALLATIONS

### ■ Microsoft® Windows® 7— Continued

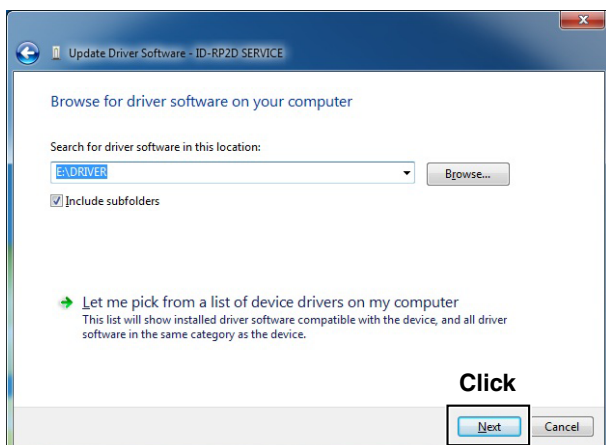
- ⑩ The “Browse for driver software on your computer” will appear. Click [Browse...].



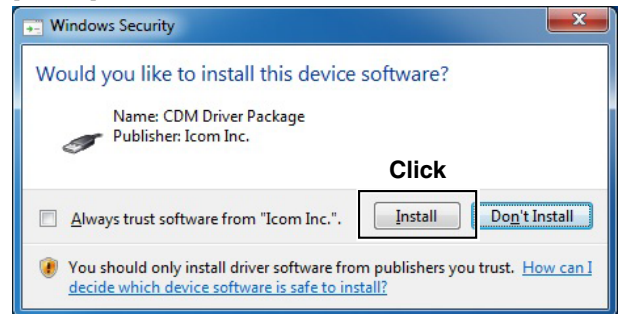
- ⑪ Select the “DRIVER” folder in the application CD, or the unzip driver file (downloaded driver file), and then click [OK].



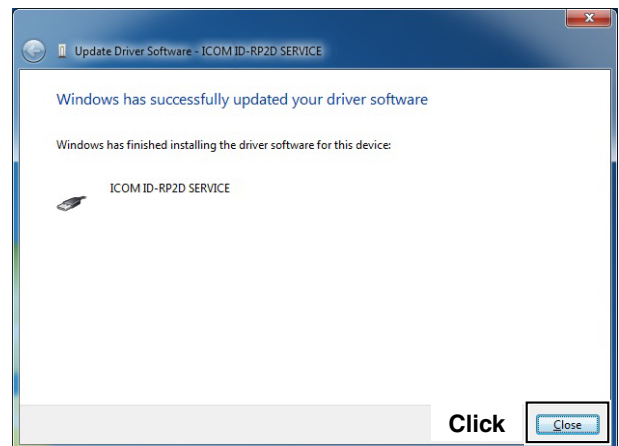
- ⑫ The “Browse for driver software on your computer” will appear again. Click [Next] to start the installation of “ID-RP2D SERVICE.”



- ⑬ When the Windows Security screen appears, click [Install] to continue.



- ⑭ After the installation is completed, “Windows has successfully updated your driver software” will appear as shown below. Click [Close].



- ⑮ The dialog “Device driver software was not successfully installed” will appear again.  
⑯ Repeat ⑧ to ⑭, to install the “ID-RP2D SERVICE” driver software.  
⑰ Eject the CD from the CD drive, and then restart the PC.



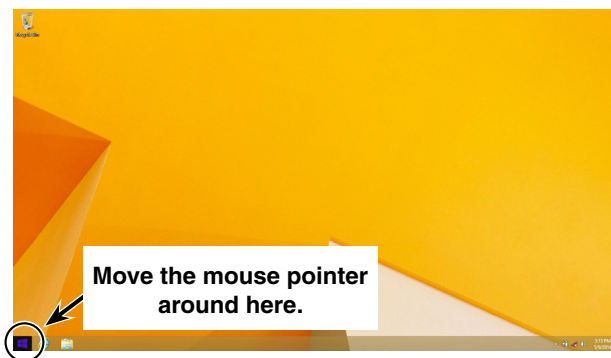
## ■ Checking the COM port

After the driver installation, check the driver availability and the COM port number.

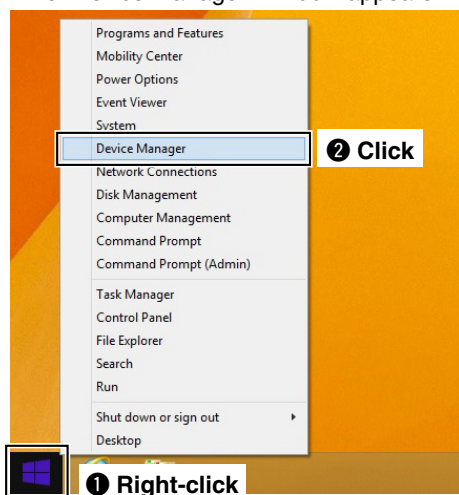
In this section, checking the COM port number of the ID-RP2D [SERVICE] connector is used for instruction example.

### ◇ Microsoft® Windows® 8.1

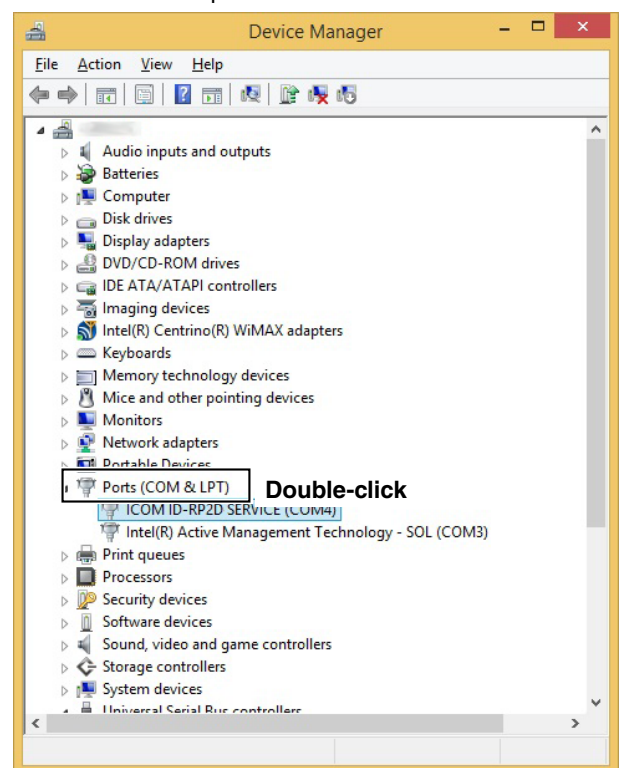
- ① Start Windows.
  - When opening the Device Manager, log in as the administrator.
- ② Connect the PC and the ID-RP2D [SERVICE] connector with the USB cable.
- ③ Move the mouse pointer to the bottom left corner of the desktop.



- ④ Right-click the Microsoft icon, and then click “Device Manager.”
  - The “Device Manager” window appears.



- ⑤ Double-click “Ports (COM&LPT)” on the “Device Manager” screen to check the COM port number.
  - When the driver is completely installed, “ICOM ID-RP2D SERVICE (COM\*)” is displayed. The screen shows the USB serial COM port number “4.”



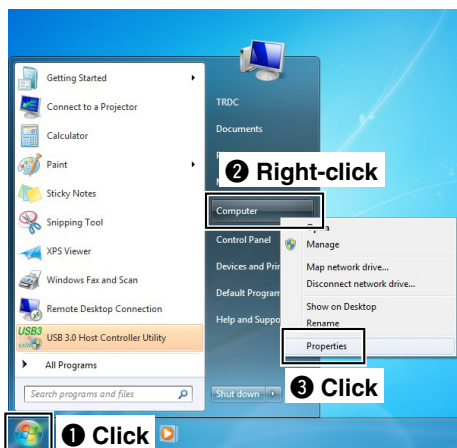
- The COM port number is displayed instead of “\*.” If the repeater has two COM ports, two COM port numbers are displayed.
- Depending on the PC environment, the COM port number may differ.
- If “!” or “x” is displayed on the “Device Manager” screen, the driver may not be properly installed. In this case, first uninstall the USB driver, then reinstall it.

### ■ Checking the COM port— continued

#### ◆ Microsoft® Windows® 7

- ① Start Windows.
  - When opening the Device Manager, log in as the administrator.
- ② Connect the PC and the ID-RP2D [SERVICE] connector with the USB cable.
- ③ Move the mouse pointer at the left-bottom corner of the desktop.
 

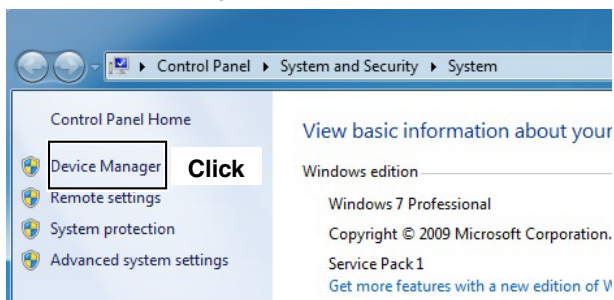
Click the Windows “START” icon, right-click “Computer” in the <Start> menu, and then click “Properties.”



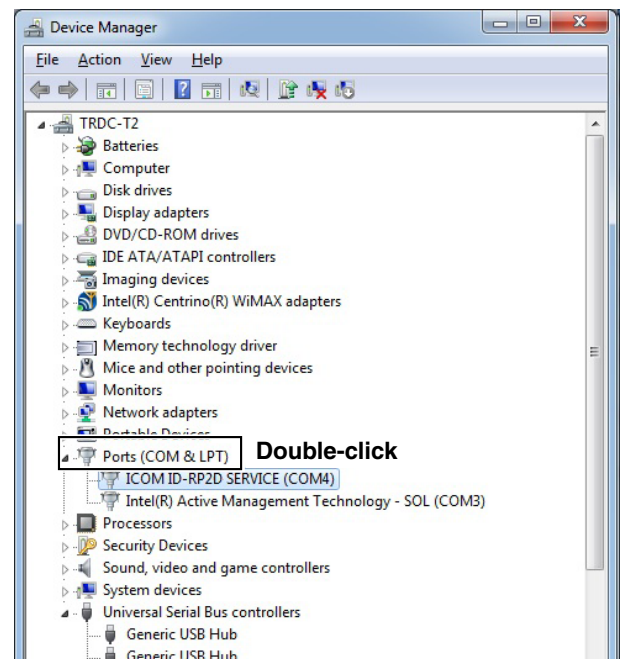
- ④ The “Control Panel Home” window will appear.
 

Click “Device Manager.”

  - The “Device Manager” window appears.



- ⑤ Double-click “Ports (COM&LPT)” on the “Device Manager” screen to check the COM port number.
  - When the driver is completely installed, “ICOM ID-RP2D SERVICE (COM\*)” is displayed. The screen shows the USB serial COM port number “4.”



- The COM port number is displayed instead of “\*.” If the repeater has two COM ports, two COM port numbers are displayed.
- Depending on the PC environment, the COM port number may differ.
- If “!” or “x” is displayed on the “Device Manager” screen, the driver may not be properly installed. In this case, first uninstall the USB driver, then reinstall it.

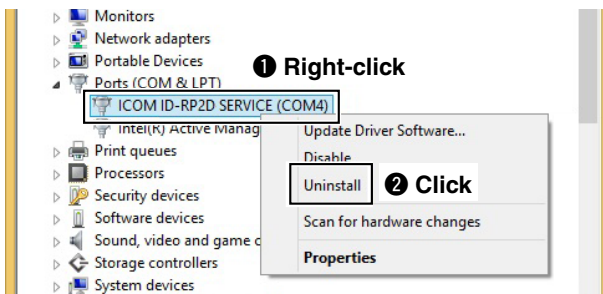
## ■ Uninstalling the USB driver

### ◇ Microsoft® Windows® 8.1

- ① Start Windows.
  - When uninstalling the driver, log in as the administrator.
- ② Connect the PC and the ID-RP2D [SERVICE] connector with the USB cable.
- ③ Move the mouse pointer to the bottom left corner of the desktop.
  - Right-click the Microsoft icon, and then click “Device Manager.”
  - The “Device Manager” window appears.
- ④ Double-click “Ports (COM&LPT)” on the “Device Manager” screen.
  - “ICOM ID-RP2D SERVICE (COM\*)” appears.



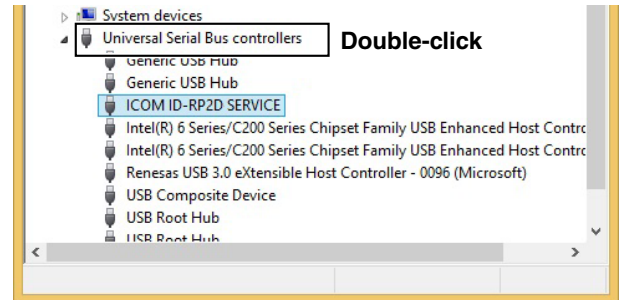
- ⑤ Right-click “ICOM ID-RP2D SERVICE (COM\*)” and then click “Uninstall.”



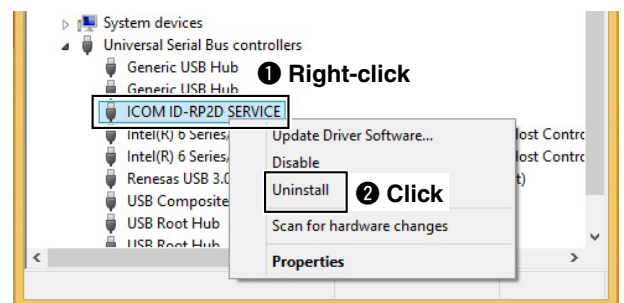
- ⑥ The “Confirm Device Uninstall” window will appear. Check “Delete the driver software for this device.” and then click [OK].



- ⑦ Double-click “Universal Serial Bus controllers” on the “Device Manager” screen.
  - “ICOM ID-RP2D SERVICE” appears.



- ⑧ Right-click “ICOM ID-RP2D SERVICE” and then click “Uninstall.”



- ⑨ The “Confirm Device Uninstall” window will appear. Check “Delete the driver software for this device.” and then click [OK].



- ⑩ Restart the PC.

## ■ Uninstalling the USB driver— continued

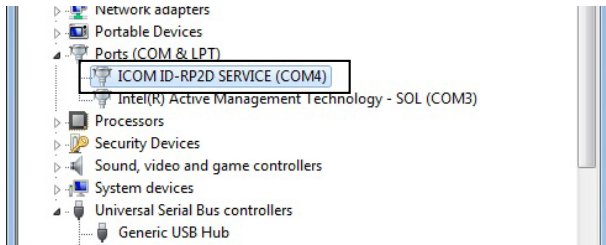
### ◇ Microsoft® Windows® 7

- ① Start Windows.
  - When uninstalling the driver, log in as the administrator.
- ② Connect the PC and the ID-RP2D [SERVICE] connector with a USB cable (A-B type: purchase separately).
- ③ Move the mouse pointer at the left-bottom corner of the desktop.
 

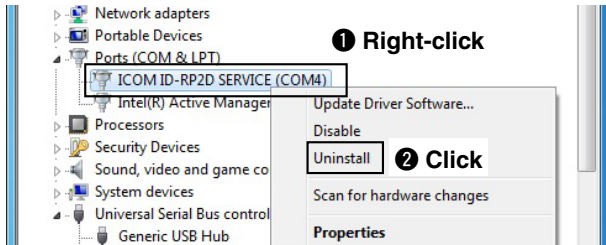
Click the Windows “START” icon, right-click “Computer” in the <Start> menu, and then click “Properties.”
- ④ The “Control Panel Home” window will appear.
 

Click “Device Manager.”

  - The “Device Manager” window appears.
- ⑤ Double-click “Ports (COM&LPT)” on the “Device Manager” screen.
  - “ICOM ID-RP2D SERVICE (COM \*)” appears.



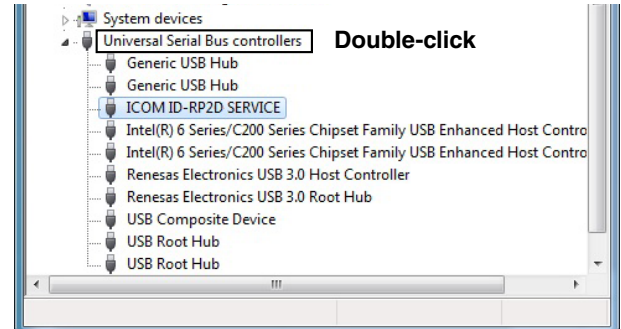
- ⑥ Right-click “ICOM ID-RP2D SERVICE (COM\*)” and then click “Uninstall.”



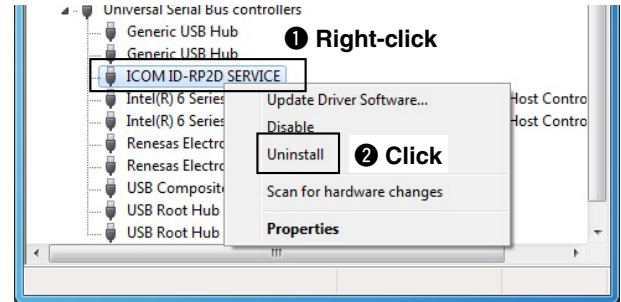
- ⑦ The “Confirm Device Uninstall” window will appear. Check “Delete the driver software for this device.” and then click [OK].



- ⑧ Double-click “Universal Serial Bus controllers” on the “Device Manager” screen.
  - “ICOM ID-RP2D SERVICE” appears.



- ⑨ Right-click “ICOM ID-RP2D SERVICE” and then click “Uninstall.”



- ⑩ The “Confirm Device Uninstall” window will appear. Check “Delete the driver software for this device.” and then click [OK].



- ⑪ Restart the PC.



The utility software is used to set call signs and operating frequencies.

Separate utility software for each ID-RP2 unit, ID-RP2C, ID-RP2D, and ID-RP2V is available.

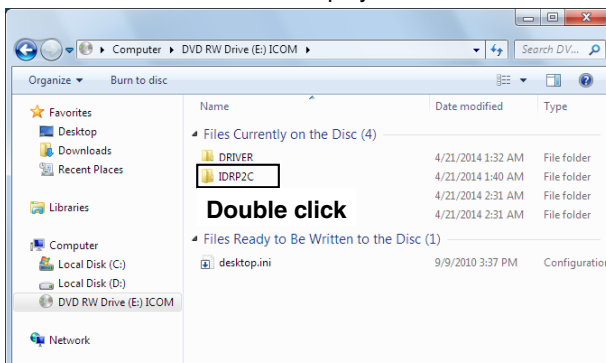
This section describes installing the utility software for the ID-RP2C as an example.

And also this section is based on using Microsoft® Windows® 7. The displayed screens, indications or operations may slightly differ from the instructions, depending on your system configuration or Windows operating system.

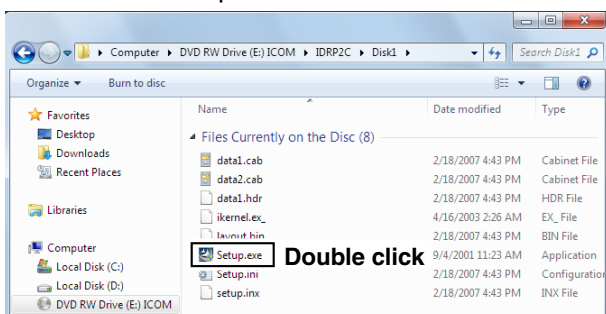
**NOTE:** The ID-RP2C boxed with this instruction manual requires the utility software revision 2.2 or later. The utility software revision 2.0 or earlier is not compatible.

## ■ Installing

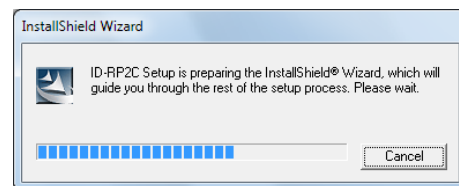
- ① Start Windows.
  - Quit all other applications if any are running.
  - When uninstalling the driver, log in as the administrator.
- ② Insert the CD that is supplied with the ID-RP2C (Application CD) into the CD drive.
- ③ Click “Computer” and then display the contents of the CD.
- ④ Double click “IDRP2C” folder.
  - Contents of the folder are displayed.



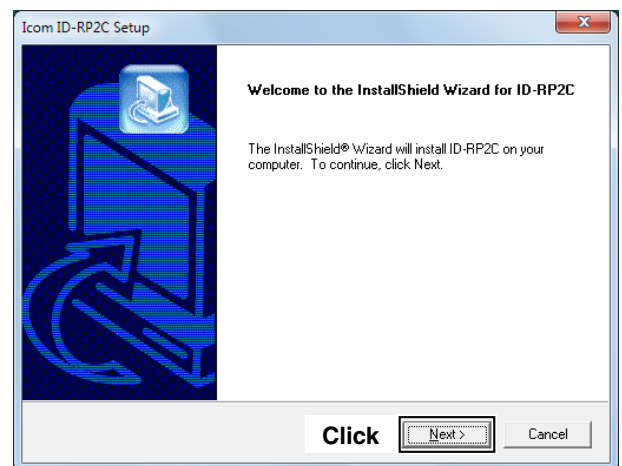
- ⑤ Double click “Setup.exe” file.



- ⑥ “InstallShield Wizard” screen appears.



- ⑦ Click [Next>].

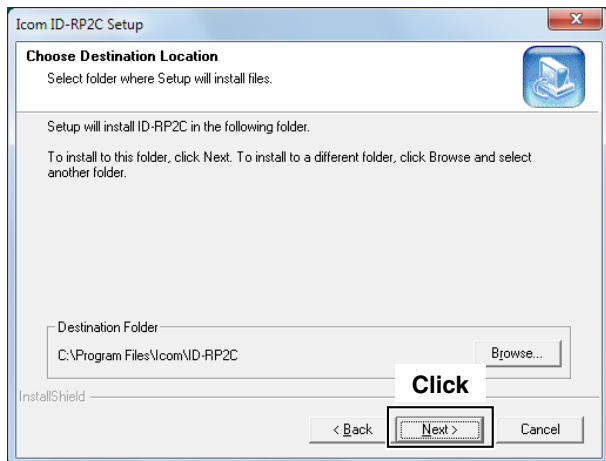


## 6 INSTALLING THE UTILITY SOFTWARE

### ■ Installing— continued

⑧ The “Choose Destination Location” screen appears.

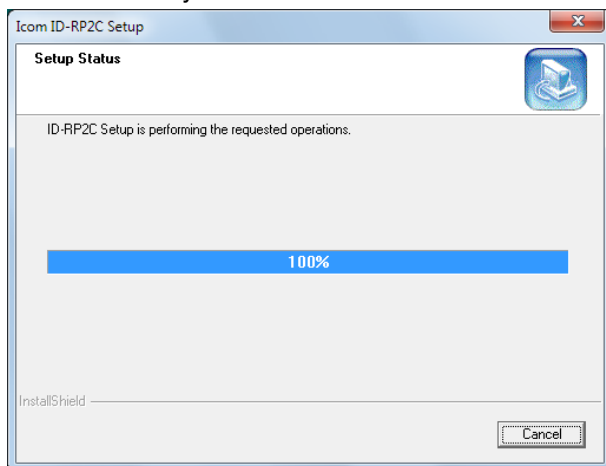
- When installing the Utility software at the displayed location, click [Next>].
- When installing to a different location, click [Browse...], select the desired location and then click [Next>].



**NOTE:** After installing the utility, the short cut icon will automatically be created on the desktop. When the icon looks like white square, right-click on the desktop, and then click “Refresh,” or, reboot the PC.

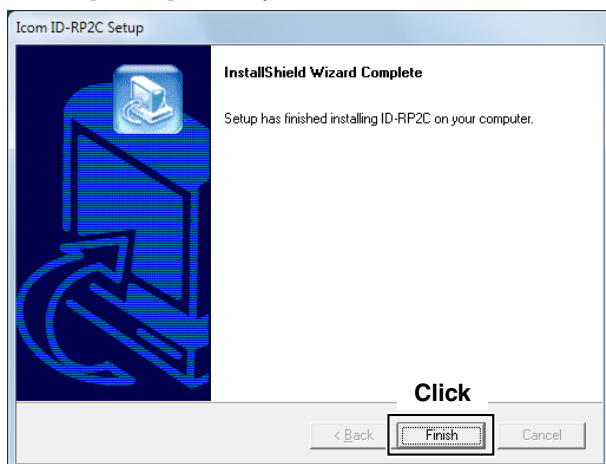
**NOTE:** Install the utility software for the ID-RP2V and the ID-RP2D in the same manner.

⑨ Starts the Utility software installation.



⑩ The “InstallShield Wizard Complete” screen appears when the installation is finished.

- Click [Finish] to complete the installation.

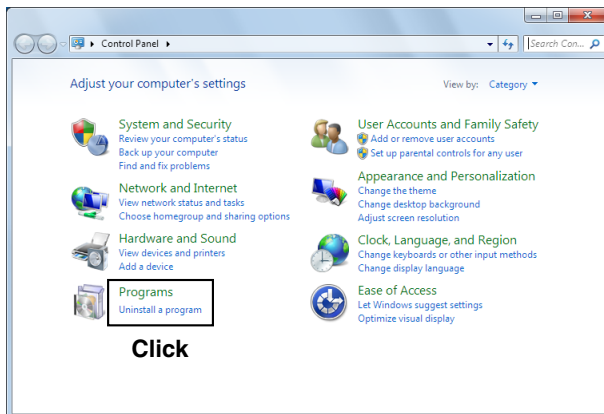


⑪ Eject the CD from the CD drive, then reboot the PC.

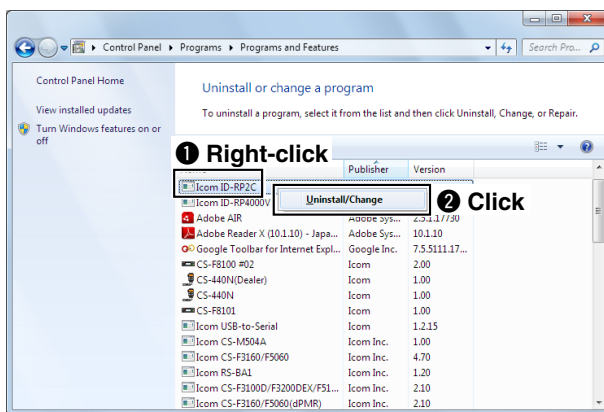
## ■ Uninstalling the Utility software

Uninstall the utility software using with the standard application in Windows, “Add and Remove Programs,” as follows.

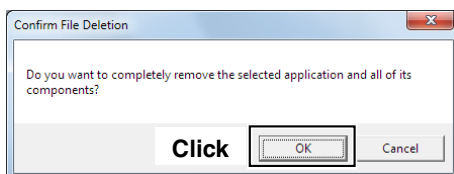
- ① Open “Control Panel” in the Start menu, and then click “Uninstall a program.”



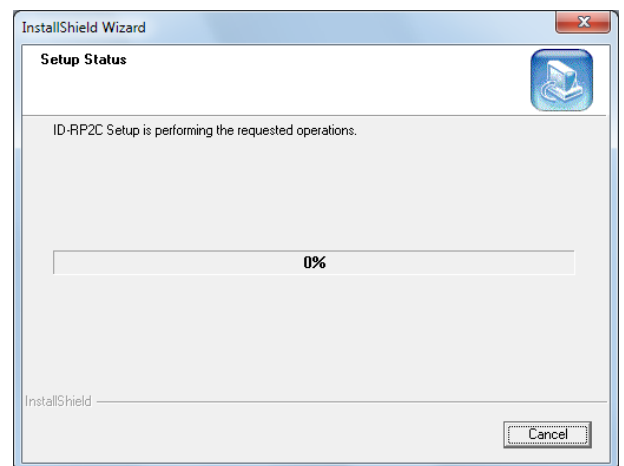
- ② Right-click the “Icom ID-RP2C,” then click “Uninstall/Change”.



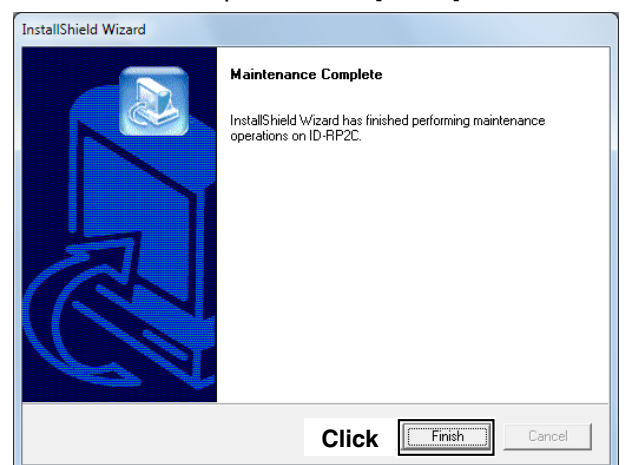
- ③ “Confirm File Deletion” screen appears, click [OK].



- ④ The screen appears as shown below when the un-installation starts.



- ⑤ The screen appears as shown below when the un-installation is completed. Click [Finish].



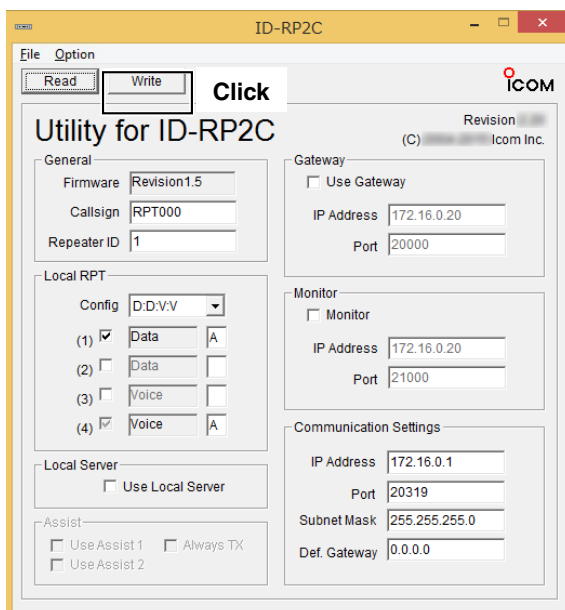
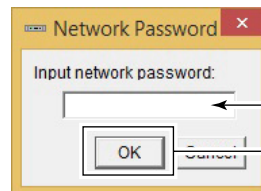
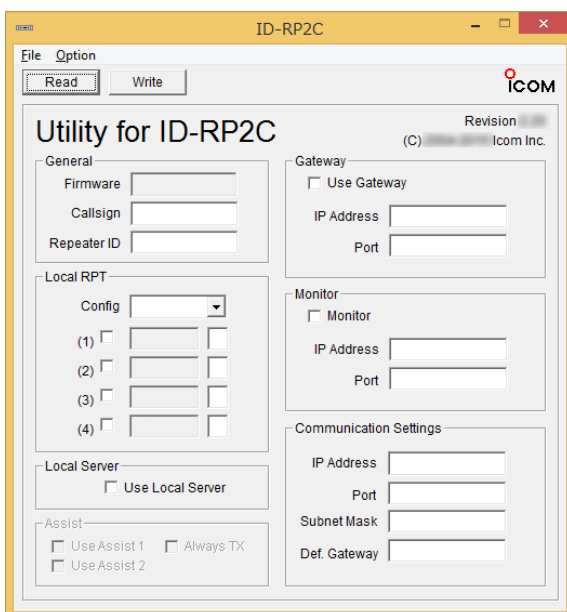
## ■ ID-RP2C setting

A LAN cable (patch connection) is used when setting the ID-RP2C settings.

The fixed IP address that can be communicated to the ID-RP2C must be set to the PC in advance.

Refer to the instruction manual of the PC or LAN card for IP address setting details.

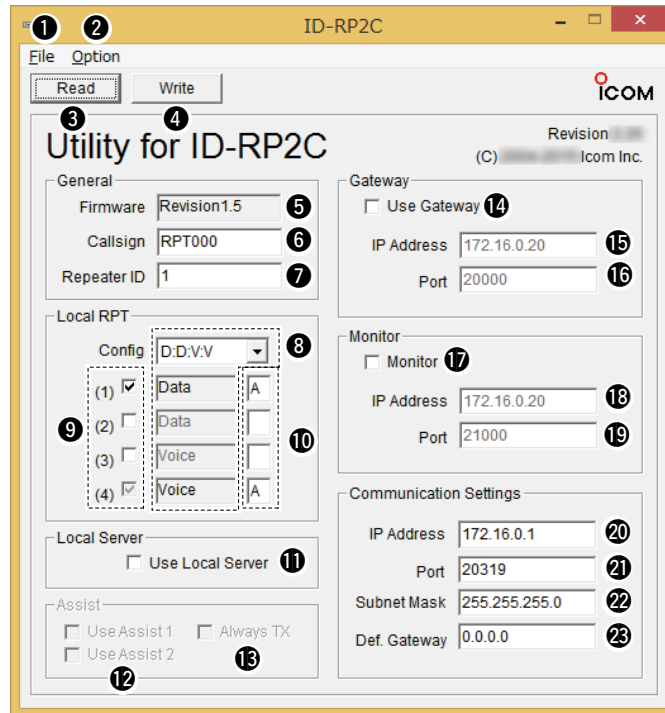
- ① Start up Windows.
- ② Connect the ID-RP2C [10BASE-T] connector and the PC's LAN port through a LAN cable (Patch connection), then turn the ID-RP2C power ON.
- ③ Start up the utility software for the ID-RP2C.
  - Double click "ID-RP2C" icon on the desktop, or select the ID-RP2C utility software from "Program" in "Start" menu.
  - Only first time, the Windows Security Alert screen appears, click [Allow access] to continue.
- ④ The screen as at left appears.
  - Check the IP address and the UDP port number using the "Network Setup" as described in ② Option menu in advance.
  - Click [Read].
- ⑤ "Network Password" screen appears.  
Enter the password then click [OK].
  - Enter the password with alphanumeric characters (case sensitive).
  - "PASSWORD" (capital letters) is the default password.



- ⑥ Reads the ID-RP2C settings, and then the screen as at left appears.
  - When the error message screen appears, confirm the LAN cable connections, IP address and subnet mask for the PC.
  - And check the IP address and UDP port settings are set to "172.16.0.1 (default)" and "20319 (default)" respectively in "Network Setup" screen by selecting "Network Setup..." in "Option" menu.
- ⑦ Set the specified call sign, IP address, repeater configuration and microwave link repeater parameters.
  - After the setting, click [Write] to transfer and program the setting into the ID-RP2C.
  - See the next page for the details of each item.
- ⑧ Quit the utility software.
  - Select "Exit" in "File" menu or click "X" on the title bar.



## ◇ ID-RP2C utility screen



### ① File menu

The following sub menus are displayed when clicked.

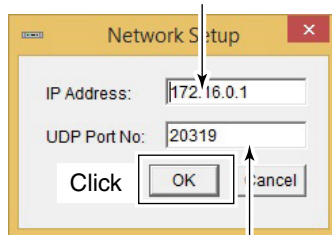
- **Read from controller:**  
Reads the setting conditions from the ID-RP2C.
- **Write to controller:**  
Transfers and programs the displayed setting conditions into the ID-RP2C.
- **Restore factory default:**  
Resets to the default setting for all items.
- **Exit:** Quits the utility software.

### ② Option menu

The following sub menus are displayed.

- **Network setup...:**  
The "Network setup" screen for IP address and UDP port number entering for accessing the ID-RP2C appears.

Enter the IP address of the ID-RP2C.  
(Default: 172.16.0.1)

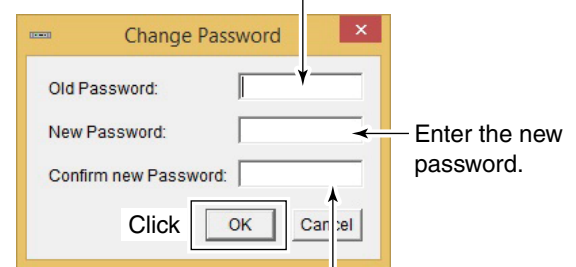


Enter the UDP port number of the ID-RP2C.  
(Default: 20319)

### • Change Password...:

The "Change Password" screen for password change for accessing the ID-RP2C.

Enter the current password. (Default: PASSWORD)



Enter the new password again for confirmation.

**IMPORTANT!:** Enter the password using with alphanumeric character (case sensitive).

**DO NOT** forget the both IP address and password setting. The access to the ID-RP2C through the utility software will be impossible if forgotten.

### ③ [Read]

Reads the ID-RP2C setting condition.

### ④ [Write]

Transfers and programs the displayed setting condition into the ID-RP2C.

◇ ID-RP2C utility screen— continued

### 5 Firmware (Revision) indication

Shows the revision number of the programmed firmware in the ID-RP2C.

### 6 Callsign (Call sign)

Enter the call sign (local repeater).

Usable characters are; A to Z (capital letters only), 0 to 9 and some symbols (!, ", #, \$, %, &, ', (, ), \*, +, ,, -, ., /, :, ;, <, =, >, ?, @, [, \, ], ^, \_).

### 7 Repeater ID

Enter the repeater identity code within 1 to 15.

The repeater ID code is an identification number allocated in each repeater, and a different code must be allocated for each repeater that operates in the same zone.

#### IMPORTANT!:

**NEVER** duplicate the ID number in the zone.

A unique ID number within 1 to 15 range must be entered. Otherwise the communications between local repeaters won't function properly.

The same repeater ID code can be allocated to the repeater if the repeater operates in a different zone.

### 8 Config (Local repeater configuration)

Selects the connected local repeater type (voice or data) for each [LOCAL RPT— CONT I/O] connector.

Click [▼] button then select the repeater type from the displayed list. The selected repeater type is displayed in the text box below.

The displayed contents cannot be edit.

### 9 Check box((1) to (4))

Click to display the check mark, "✓," in the corresponding connector name. The names correspond to [CONT I/O] connectors on the ID-RP2C rear panel ((1), (2), (3) and (4) from the left).

#### IMPORTANT!:

When no check mark is displayed, the local repeater cannot be operated even if the repeater is connected to the system.

### 10 Unit initial

Enter the local repeater initial (one character) for each connected local repeater to [LOCAL RPT— CONT I/O] connector.

This initial is an identical initial for each unit, and follows the call sign.

e.g.: The "C" is the initial of JA3YUA\_C.

Usable characters are A to D (capital letters only).

#### IMPORTANT!

The initial "A" must be applied to both the initial voice repeater (ID-RP2V or other model) and the initial data repeater (currently ID-RP2D only). NEVER duplicate the initial with any additional data or voice repeaters installed at the site. Otherwise the communications between local repeaters won't function properly.

### 11 Use Local Server (local server usage)

Turn the local server (e-mail, WEB server, etc.) connection availability to the ID-RP2C ON and OFF.

Remove the check mark (✓) when no local server is connected.

Without the check mark (✓) set, an Un-connectable command is automatically sent when the packet is received at the local server.

**NOTE:** Gateway connection is excluded with this setting.

Therefore, remove the check mark (✓) when no local server is connected even when connecting a gateway server.

### 12 Use Assist 1/2 (Assist repeater 1/2 usage)

The ID-RP2C boxed with this instruction manual cannot use this function.

### 13 Always TX (Continuous transmission)

The ID-RP2C boxed with this instruction manual cannot use this function.

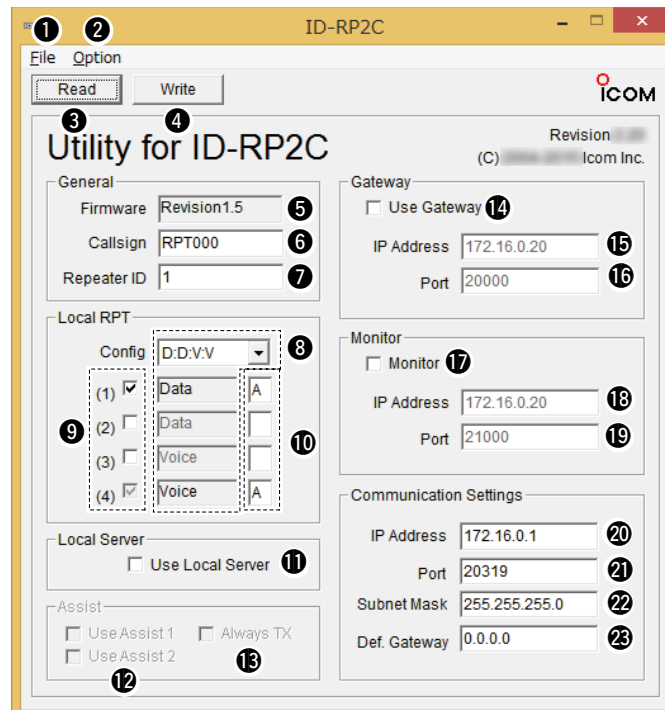
### 14 Use Gateway (gateway usage)

Selects the gateway connection capability with this local repeater ON and OFF.

Click the box next to "Use Gateway" when you want to allow a gateway connection.

• The check mark (✓) appears.

Without the check mark (✓) set, an Un-connectable command is automatically sent when the packet is received through a gateway.



#### 15 IP Address

Enter the gateway IP address.

#### 16 Port (port number)

Enter the gateway UDP port number.

#### 17 Monitor (monitor usage)

Select to monitor the local area call or not.

Click the box next to "Monitor" to monitor the call.

- The check mark (✓) appears.

#### 18 IP Address

Enter the gateway IP address to send the local area call voice and data packets to.

(Default: 172.16.0.20)

#### 19 Port (port number)

Enter the gateway UDP port number to send the local area call voice and data packets to.

(Default: 21000)

#### 20 IP Address

Enter the local repeater IP address.

(Default: 172.16.0.1)

#### 21 Port (port number)

Enter the repeater UDP port number.

(Default: 20319)

#### 22 Subnet Mask

Enter the subnet mask of the network if the repeater is connected to the existing network (e.g., LAN).

If a PC is connected, set the same subnet mask of the PC for the repeater and server (gateway or local server) settings.

#### 23 Def. Gateway (Default gateway)

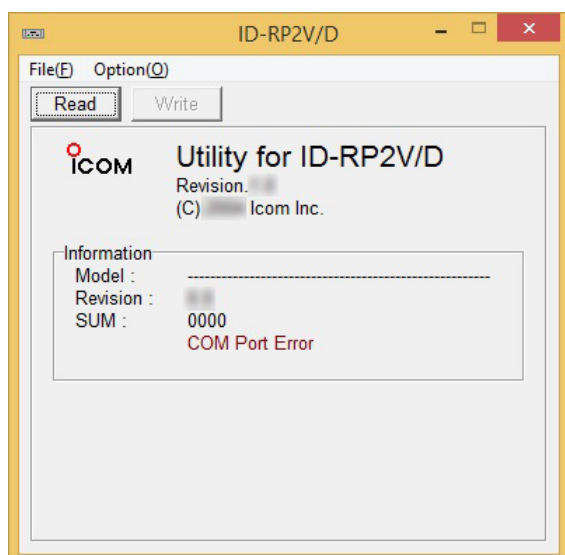
Set the default gateway address of the network that to be connected to, if connecting to another network through the repeater.

And, set the same default gateway address of the local server, if the local server has a different network setting from the repeater network setting.

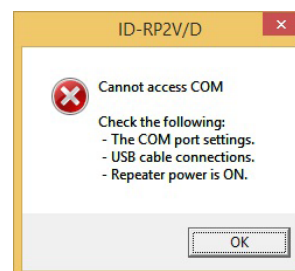
## Frequency setting for ID-RP2D

### NOTE:

The repeater unit connection may not be recognized with the PC according to the using USB cable length.  
Use the shorter USB cable as possible is recommended.

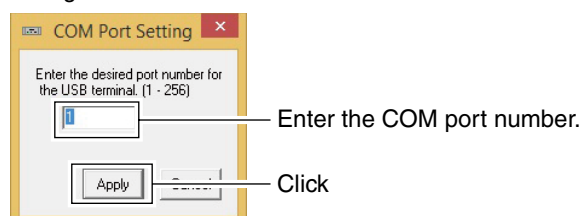


- ① Start up the PC.
- ② Connect a PC's USB port and [SERVICE] connector of the ID-RP2D with an A-B type USB cable (User supplied), then turn the ID-RP2D power ON.
- ③ Start up the ID-RP2V/D utility software.  
Double click the "ID-RP2VD" icon on the desktop or select the "ID-RP2VD" in "Program" in "Start" menu.
- ④ The screen as at left appears, then the dialog below is displayed.
  - Click [OK].



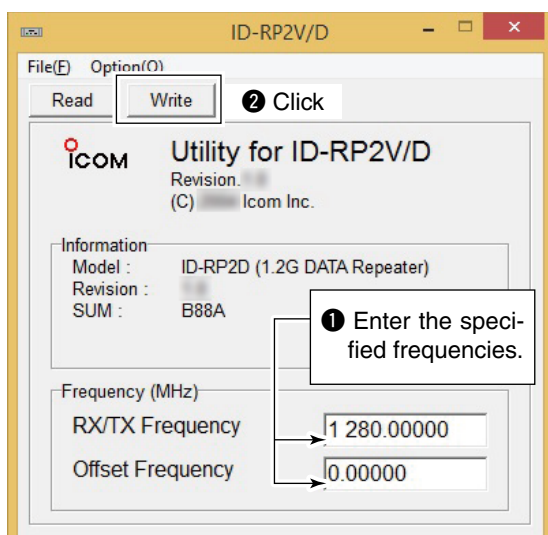
**NOTE:** The screen, described in steps ⑤, appears instead of these screens when the correct COM port number is set.

- Click <Option (O)> menu then select <COM Port(P)...>. Enter the allocated number of the ID-RP2D [SERVICE] connector then click [Apply] in the displayed "COM Port Setting" screen.



**NOTE:** See pages 14 or 15 for the COM port number confirmation details.

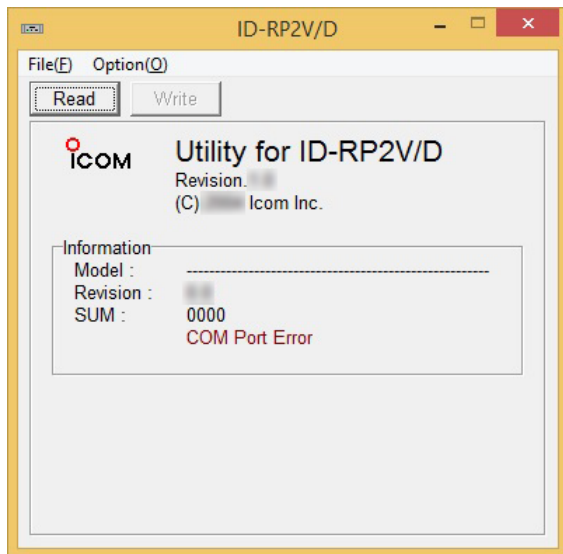
- ⑤ The utility software reads the ID-RP2D setting and the screen as at left appears when the correct COM port number is set.
- ⑥ Enter the specified operating frequency into "RX Frequency" column.
  - Enter the offset frequency into "Offset Frequency" column, if specified.
- ⑦ Click [Write] to program the set frequency into the ID-RP2D.



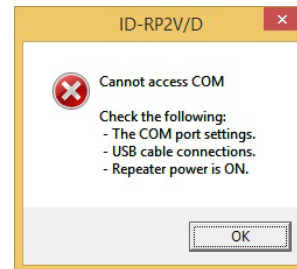
## Frequency setting for ID-RP2V

### NOTE:

The repeater unit connection may not be recognized with the PC according to the using USB cable length.  
Use the shorter USB cable as possible is recommended.

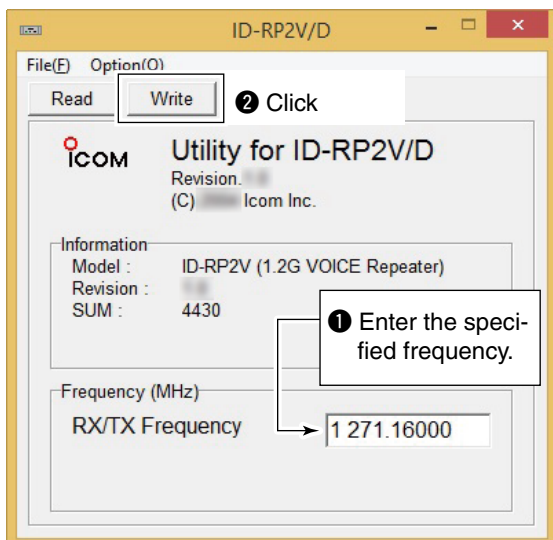
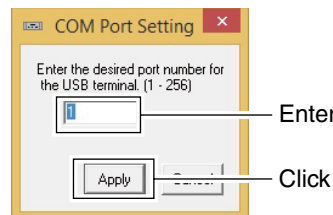


- ① Start up the PC.
- ② Connect a PC's USB port and the ID-RP2V [SERVICE] connector with an A-B type USB cable (User supplied), then turn the ID-RP2V power ON.
  - Connect a USB cable to [SERVICE R] when setting receive frequency.
  - Connect a USB cable to [SERVICE T] when setting transmit frequency.
- ③ Start up the ID-RP2V/D utility software.  
Double click the "ID-RP2VD" icon on the desktop or select the "ID-RP2VD" in "Program" in "Start" menu.
- ④ The screen as at left appears, then the dialog below is displayed.
  - Click [OK].



**NOTE:** The screen, described in steps ⑤, appears instead of these screens when the correct COM port number is set.

- Click <Option (O)> menu then select <COM Port(P)...>. Enter the allocated number of the ID-RP2V [SERVICE] connector then click [Apply] in the displayed "COM Port Setting" screen.



**NOTE:** See pages 14 or 15 for the COM port number confirmation details.

- ⑤ The utility software reads the ID-RP2V setting and the screen as at left appears when the correct COM port number is set.
- ⑥ Enter the specified receive and transmit frequencies into "RX/TX Frequency" column.
- ⑦ Click [Write] to program the set frequencies into the ID-RP2V.

## ■ Troubleshooting

If your repeater seems is not operating correctly, check the following points before sending it to an authorized Icom service center.

PROBLEM	POSSIBLE CAUSE	SOLUTION	REF.
Does not turn ON.	<ul style="list-style-type: none"> <li>Power connector has a poor contact.</li> <li>Blown fuse.</li> </ul>	<ul style="list-style-type: none"> <li>Check the connector pins and then re-connect the DC power cable.</li> <li>Fix the problem, then replace the fuse.</li> </ul>	<p>p. 7</p> <p>p. 28</p>
No transmit output power, or low output power.	<ul style="list-style-type: none"> <li>Antenna or coaxial cable has problems.</li> </ul>	<ul style="list-style-type: none"> <li>Check, and if necessary, replace the coaxial cable or the antenna connector again.</li> </ul>	pp. 6, 7
Sensitivity is low and only strong signals are heard.	<ul style="list-style-type: none"> <li>Antenna or coaxial cable has problems.</li> </ul>	<ul style="list-style-type: none"> <li>Check, and if necessary, replace the coaxial cable or the antenna connector again.</li> </ul>	pp. 6, 7
Does not function, even if a signal is received.	<ul style="list-style-type: none"> <li>Unit initial setting is wrong or duplicated.</li> <li>Config. Setting is wrong.</li> <li>No check mark (✓) is applied.</li> </ul>	<ul style="list-style-type: none"> <li>Set "A" to each voice and data repeater and never duplicate the initial between voice repeaters and/or data repeaters.</li> <li>Set the corresponding conditions to the connected repeater combination.</li> <li>Apply a check mark (✓) into the appropriate connector number.</li> </ul>	<p>p. 23</p> <p>p. 23</p> <p>p. 23</p>
The PC does not recognize the repeater	<ul style="list-style-type: none"> <li>The USB cable is too long.</li> </ul>	<ul style="list-style-type: none"> <li>Use a shorter USB cable.</li> </ul>	p. 9
The settings cannot be programmed into the repeater properly.	<ul style="list-style-type: none"> <li>The USB cable is too long.</li> </ul>	<ul style="list-style-type: none"> <li>Use a shorter USB cable.</li> </ul>	pp. 25–26

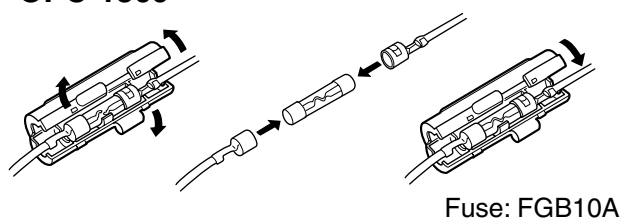
## ■ Cleaning

**DO NOT** use harsh solvents such as benzine or alcohol when cleaning, as they can damage the repeater's surfaces.

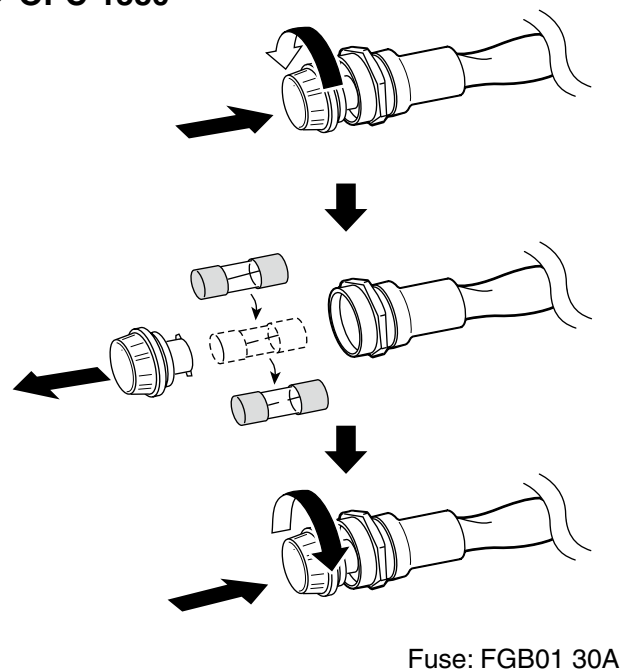
## ■ Replacing fuses

If the fuse blows or the repeater stops functioning, find the source of the problem, repair it, and then replace the damaged fuse with a new, rated one as shown below.

### ◇ OPC-1309



### ◇ OPC-1380



## ■ Specifications

### ◇ ID-RP2C

#### • General

Power supply requirement:	13.8 V DC $\pm$ 15% (negative ground)
Current drain:	Less than 0.5 A
Usable temperature range:	-10°C to +50°C; +14°F to +122°F
Dimensions (approximately):	483(W)×44(H)×257(D) mm; 19.0(W)×1.7(H)×10.1(D) inches (projections not included)
Weight (approximately):	2.7 kg; 5 lb 15 oz
Repeater control protocol:	Compatible to D-STAR standard

#### • Local repeater interface

Max. number of connections:	4
Communication speed:	Data 128 kbps Voice 4.8 kbps
Cable length (approximately):	3 m; 10 ft (standard; supplied cable of the ID-RP2D/V)

#### • Wired interface

Number of connector:	1
Type of connection:	10Base-T
MAC address:	Unique ID
IP address:	Programmed with the utility.



## ◇ ID-RP2D/ID-RP2V

			ID-RP2D	ID-RP2V
General	Frequency range	Receive	1240 to 1300 MHz	
		Transmit	1240 to 1300 MHz	
	Type of emission		F1D (GMSK)	F1D (GMSK) *F7W for system operation
	Frequency stability		±2.5 ppm (based on 25°C; +77°F)	
	Frequency resolutions		5/6.25 kHz	
	Antenna connector		N type	
	Antenna impedance		50 Ω (unbalanced)	
	Communication speed		128 kbps	4.8 kbps
	Power supply requirement		13.8 V DC ±15% (negative ground)	
	Current drain	Tx (High)	Less than 6.0 A	Less than 7.0 A
		(Low)	Less than 2.7 A	Less than 3.0 A
		Rx Stand-by	Less than 0.7 A	Less than 1.0 A
	Usable temperature range		-10°C to +50°C; +14°F to +122°F	
	Dimensions (projections not included)		483(W)×88(H)×428(D) mm; 19(W)×3.5(H)×16.9(D) inches	
	Weight (approximately)		6.2 kg; 13 lb 10 oz	7.5 kg; 16 lb 9 oz
Transmitter	Tx output power (at 13.8 V DC)	High	9–12 W	6–12 W
		Low	0.5–1.2 W	0.5–1.2 W
	Modulation system		QPSK (243.95 MHz)	
	Occupied bandwidth		Less than 130 kHz	Less than 5.5 kHz
Receiver	Spurious emissions		Less than -50 dB	
	Receive system		Double-conversion superheterodyne	Triple-conversion superheterodyne
	Intermediate frequencies	1st	243.95 MHz	243.95 MHz
		2nd	10.7 MHz	31.05 MHz
		3rd	N/A	450 kHz
	Sensitivity (BER 1×10 <sup>-2</sup> )		Less than 2.24 μV	Less than 0.45 μV
	Selectivity		More than 140 kHz/6 dB Less than 520 kHz/40 dB	More than 6 kHz/6 dB Less than 18 kHz/50 dB
	Receive spurious		Less than -57 dBm	
	Spurious and image rejection ratio		More than 60 dB (General) More than 50 dB (IF and I <sub>F/2</sub> )	

All stated specifications are subject to change without notice or obligation.

## ■ Options

ID-RP2D 1.2 GHz DATA REPEATER  
 ID-RP2V 1.2 GHz DIGITAL VOICE REPEATER  
 AH-108\* 1.2 GHz COLLINEAR ANTENNA

ID-RP2000V VHF DIGITAL VOICE REPEATER  
 ID-RP4000V UHF DIGITAL VOICE REPEATER

\*Not available in European countries as of November 2017.

## ■ About CE and DOC

**CE** Hereby, Icom Inc. declares that the versions of ID-RP2C which have the “CE” symbol on the product, comply with the essential requirements of the Radio Equipment Directive, 2014/53/EU, and the restriction of the use of certain hazardous substances in electrical and electronic equipment Directive, 2011/65/EU. The full text of the EU declaration of conformity is available at the following internet address:  
<http://www.icom.co.jp/world/support>

## ■ Disposal



The crossed-out wheeled-bin symbol on your product, literature, or packaging reminds you that in the European Union, all electrical and electronic products, batteries, and accumulators (rechargeable batteries) must be taken to designated collection locations at the end of their working life. Do not dispose of these products as unsorted municipal waste. Dispose of them according to the laws in your area.

## ■ Country code list

### • List of Country codes ( ISO 3166-1)

	Country	Codes		Country	Codes
1	Austria	AT	18	Liechtenstein	LI
2	Belgium	BE	19	Lithuania	LT
3	Bulgaria	BG	20	Luxembourg	LU
4	Croatia	HR	21	Malta	MT
5	Czech Republic	CZ	22	Netherlands	NL
6	Cyprus	CY	23	Norway	NO
7	Denmark	DK	24	Poland	PL
8	Estonia	EE	25	Portugal	PT
9	Finland	FI	26	Romania	RO
10	France	FR	27	Slovakia	SK
11	Germany	DE	28	Slovenia	SI
12	Greece	GR	29	Spain	ES
13	Hungary	HU	30	Sweden	SE
14	Iceland	IS	31	Switzerland	CH
15	Ireland	IE	32	Turkey	TR
16	Italy	IT	33	United Kingdom	GB
17	Latvia	LV			

[illegible]

**Count on us!**

ID-RP2C  
#31 (Europe)

<Intended Country of Use>											
■ AT	■ BE	■ CY	■ CZ	■ DK	■ EE						
■ FI	■ FR	■ DE	■ GR	■ HU	■ IE						
■ IT	■ LV	■ LT	■ LU	■ MT	■ NL						
■ PL	■ PT	■ SK	■ SI	■ ES	■ SE						
■ GB	■ IS	■ LI	■ NO	■ CH	■ BG						
■ RO	■ TR	■ HR									