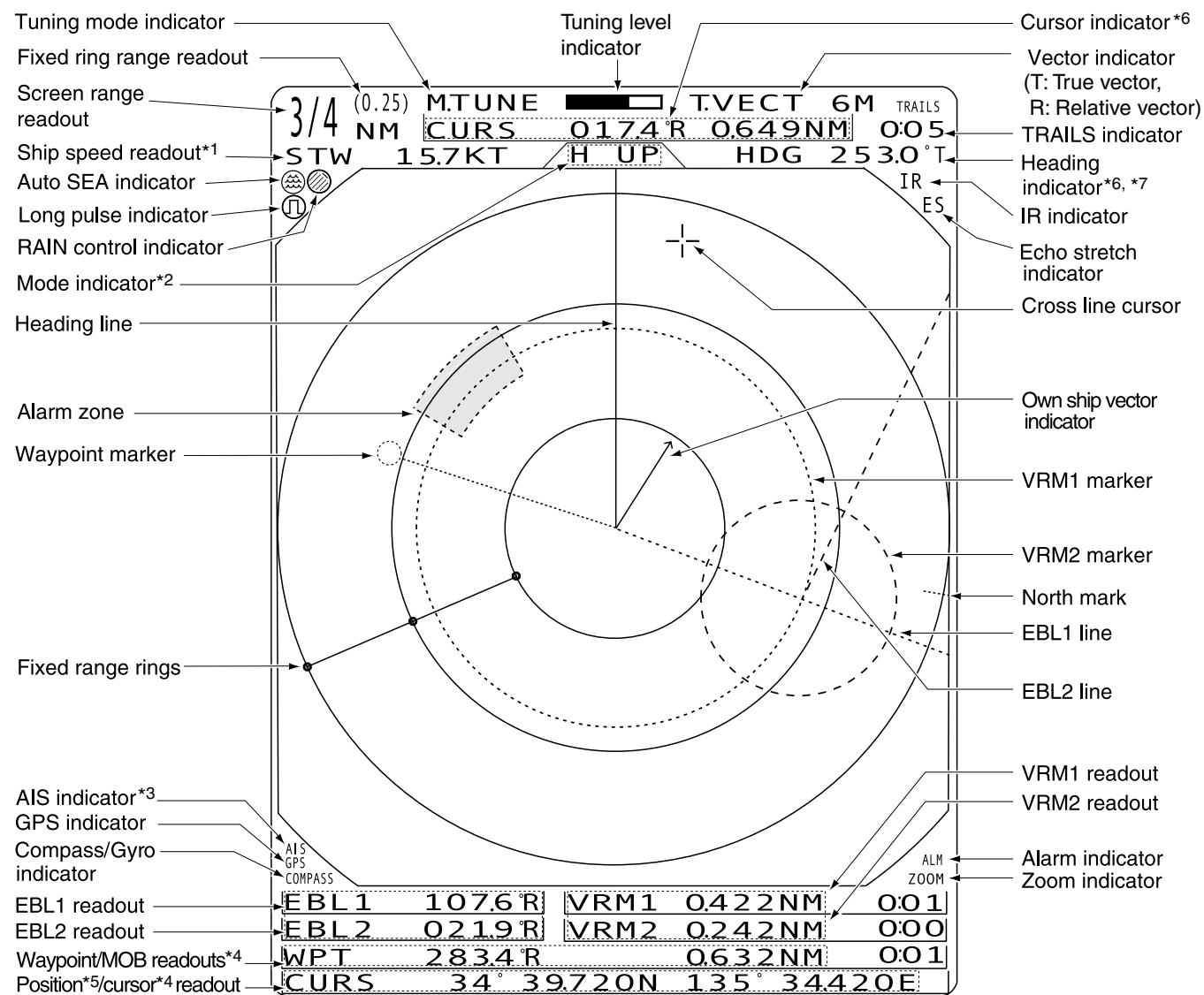


The ATA or AIS functions are described in the instruction manual. Please see the manual for details.

■ Display information



*1 STW (Speed Through the Water) : Speed sensor is required.

SOG (Speed Over Ground) : GPS data is required.

*2 North-up and Course-up screens can be used only when a bearing input (NMEA, N+1 or AUX) device is connected.

*3 AIS data is required.

*4 Bearing data and position data are required.

*5 Your position data is required.

*6 R: Relative bearing, T: True bearing, M: Magnetic bearing

*7 COG (Course Over Ground) is displayed when "BRG INPUT" in the INT. SETTING menu is selected "GPS."

Control functions

[GAIN] [增益]

Adjusts the receiver amplifier gain.

[SEA] [海浪抑制]

This function eliminates echoes from waves at close range. It reduces the receiver gain for close objects within a radius of 8 NM to eliminate sea clutter. Rotate the control fully clockwise to activate the automatic control function. SEA indicator (☼) appears in the upper left of the screen.

[RAIN] [雨雪抑制]

This function eliminates echoes from rain, snow, fog and so on.

Rotate the control fully counter clockwise to deactivate the control function.

The RAIN indicator (☼) disappears.

[TARGET] [标记]

○ Operating in the AIS mode

- ➔ Push to select a target.
- ➔ Hold down for 1 second to toggle the selected target between activated and sleeping.

○ Operating in any other mode

- ➔ Push to select the desired ATA target data (1 to 10, or OFF).
- ➔ Hold down for 1 second to set the target as caught or released.

[ALM] [报警]

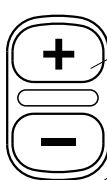
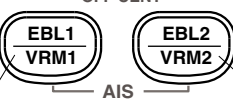
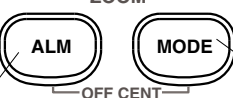
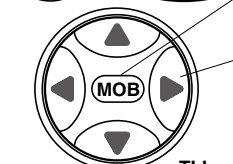
Turns the alarm function ON and OFF. Hold down to enter the Alarm Area Set mode.

[EBL1 (VRM1)] [方位线1(距标1)]

Displays the EBL1 and VRM1. Push [◀ ▶ ▲ ▼] to adjust the EBL or VRM size.

[BRILL] [亮度]

Push to increase or decrease the brilliance of the picture on the screen.



[POWER] [电源开关]

Push to turn the power ON or OFF.

[TX (SAVE)] [发射(节电)]

Push to toggle between the TX mode and the Standby mode.

Hold down 1 second to turn ON the Power Save function.

[+]/[-] [量程+]/[量程-]

Push to increase or decrease the screen range.

[MOB] [标位]

Push the key to mark the MOB (Man over board) position.

[◀ ▶ ▲ ▼] key pads

Use to activate and move the cross line cursor. These keys can also be used to select a menu item or change settings.

[TRAILS] [尾迹显示]

Push to toggle the TRAIL function ON and OFF.

Hold down the key for 1 second to output the position information where the cursor is placed to the NMEA output terminals.

• TLL output requires bearing data and position data.

[MODE] [工作模式]

Push to toggle between the H UP, C UP, N UP and TM modes.

[EBL2 (VRM2)] [方位线2(距标2)]

Displays the EBL2 and VRM2. Push [◀ ▶ ▲ ▼] to adjust the EBL or VRM size.

[MENU] [菜单]

Calls up VIDEO, FUNCTION, ATA AIS, TARGET or INT. SETTING menus. (See the list below.)

MENU list

VIDEO MENU

TUNE	AUTO	MANUAL
D.RANGE	NAR.	MID. WIDE
IR	OFF	1 2
STRETCH	OFF	ON
PULSE	SP	LP
SEA	1 6S	2 15S 3 30S 4 1M
TRAIL TIME	3M	6M 15M

FUNCTION MENU

RING	OFF	ON
WPT	OFF	ON
POSN DISP	SHIP	CURS
DIST UNIT	NM	KM
BRG	TRUE	MAG
DIRECTION	TRUE	360°R
ZONE ALARM	IN	OUT
BEEP	OFF	ON
OWN VECT	OFF	ON

ATA AIS MENU

ATA	OFF	ON
ATA No.DISP	OFF	SEL
ATA ALARM	OFF	ON
AIS DISPLAY	OFF	ON
AIS ALARM	OFF	ON
AIS RANGE	8.0NM	
AUTO ACTIVATE	1.0NM	
NUMBER OF AIS	100	
SLOW WARN	0.1KT	
LOST AIS TRGT	ERASE	

INT. SETTING

MAG VAR	AUTO	MANUAL
BRG INPUT	NMEA	N+1 0.0° W
SPD INPUT	GPS	AUX LOG*
TX INH START	0°	
TX INH ANGLE	0°	
SAVE TIME	1M	6M 15M 30M
SYMBOL	1	2 3
CHARACTER	1	2 3
KEY ILLUM	1	2 3 4

TARGET MENU

VECT MODE	TRUE	REL
VECT TIME	6M	
CPA LIMIT	1.0NM	
TCPA LIMIT	1 M	
TARGET TRACK	1 M	

Push [MENU] to select the item and the option.

*The "LOG" is not displayed when the BRG INPUT is set to "GPS."