



DRIVER INSTALLATION GUIDE

Please read this installation guide before installing the USB driver of the cloning cable or the data cable.

NOTE:

- The USB driver cannot be used with “RT” versions of Microsoft® Windows® 8.1.
- These instructions are based on using Windows 10.

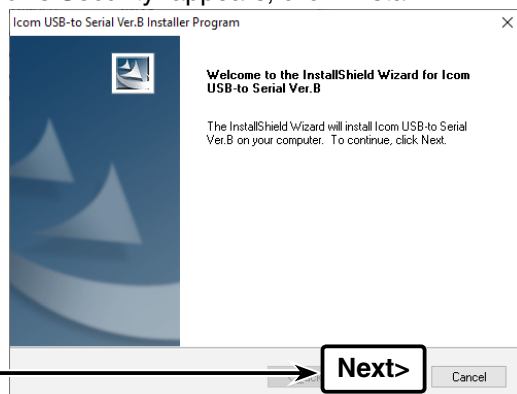
NOTE:

- After the USB driver installation has been completed (Step 1), connect the cable to the PC (Step 2).
- The displayed dialog boxes, indications or operations may differ slightly from the following instructions, depending on your operating system, system settings and its service pack level.

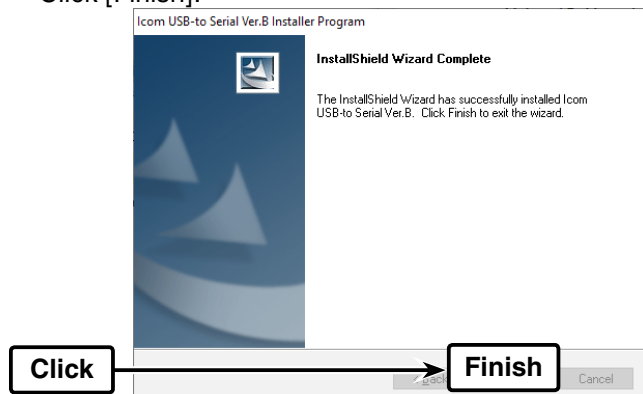
DRIVER INSTALLATION (STEP 1)

- When installing the USB driver, log in as the **administrator**.

- ① Make sure Windows has completed its start-up, and no other applications are running.
- ② Open the unzipped folder in the file downloading procedure.
- ③ Double click “ICOM USB Driver\Installer_B.exe.”
 - When “User Account Control” appears, click [Yes] to continue.
- ④ “Welcome to the InstallShield Wizard for Icom USB-to serial Ver. B” appears.
Click [Next >] to begin the installation.
- ⑤ If “Windows Security” appears, click “Install”.



- ⑥ After the installation has completed, “InstallShield Wizard Complete” appears.
Click [Finish].

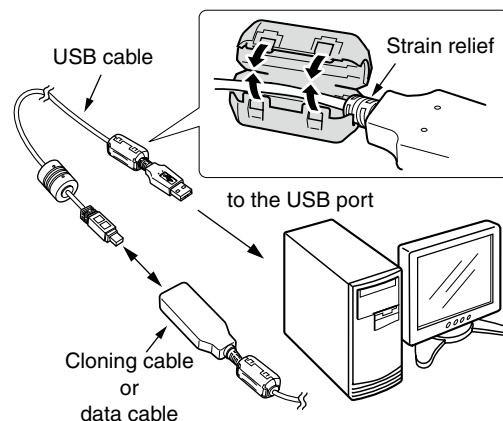


CABLE CONNECTION (STEP 2)

After completing Step 1, connect the cloning cable or data cable to the PC. The PC automatically starts the USB-to-Serial Comm Port installation.

Connect the cloning cable or data cable to the USB cable, and then the USB cable to the PC's USB port, as illustrated below.

- Attach the Ferrite EMI filter to the USB cable and the tip of the strain relief.



- Depending on the computer, a confirmation screen for restart is displayed.

COM PORT CONFIRMATION (STEP 3)

After the driver installation has completed, confirm the driver availability and the port number.
The COM port number is used to set communications with the cloning software.

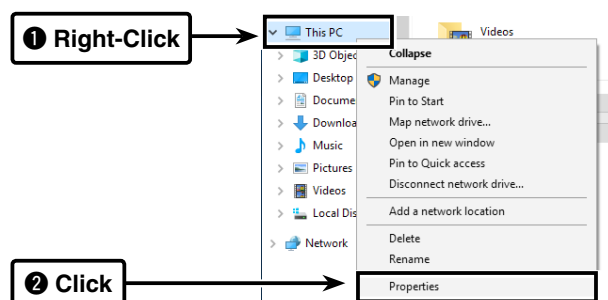
- ① Select "Desktop" and click the folder icon at the bottom of the screen.

- The "Libraries" window is displayed



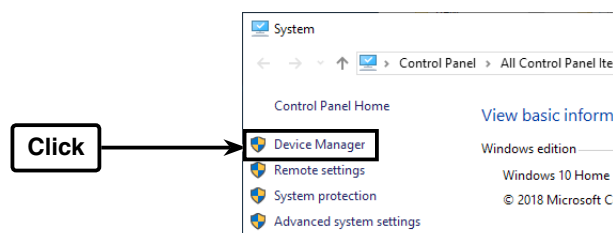
- ② Right-Click [This PC], and then click [Properties], as shown below.

- The "System" window appears.



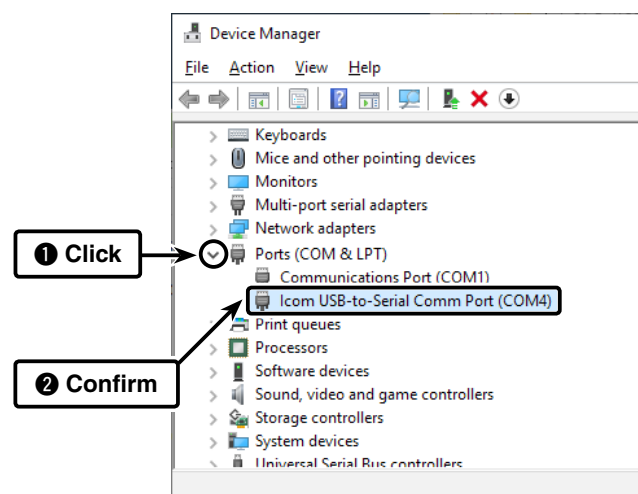
- ③ Click [Device Manager].

- "Device Manager" appears.



- ④ Click the ">" next to "Ports (COM&LPT)." Confirm "Icom USB-to-Serial Comm Port (COM*)" is displayed.

- In this example, the COM port number is "4."



- If the COM port number is not displayed, or several numbers are displayed at the same time like "Icom USB-to-Serial Comm Port (COM*)(COM*)", the driver may not be properly installed. In such case, uninstall the USB driver and install it again.
- You can uninstall the program using the "Uninstall a program" in the Windows Control Panel.

Icom, Icom Inc. and the Icom logo are registered trademarks of Icom Incorporated (Japan) in Japan, the United States, the United Kingdom, Germany, France, Spain, Russia and/or other countries.

Adobe, Acrobat, and Reader are registered trademarks of Adobe Systems Incorporated in the United States and/or other countries.

Microsoft and Windows are registered trademarks of Microsoft Corporation in the United States and/or other countries.

All other products or brands are registered trademarks or trademarks of their respective holders.